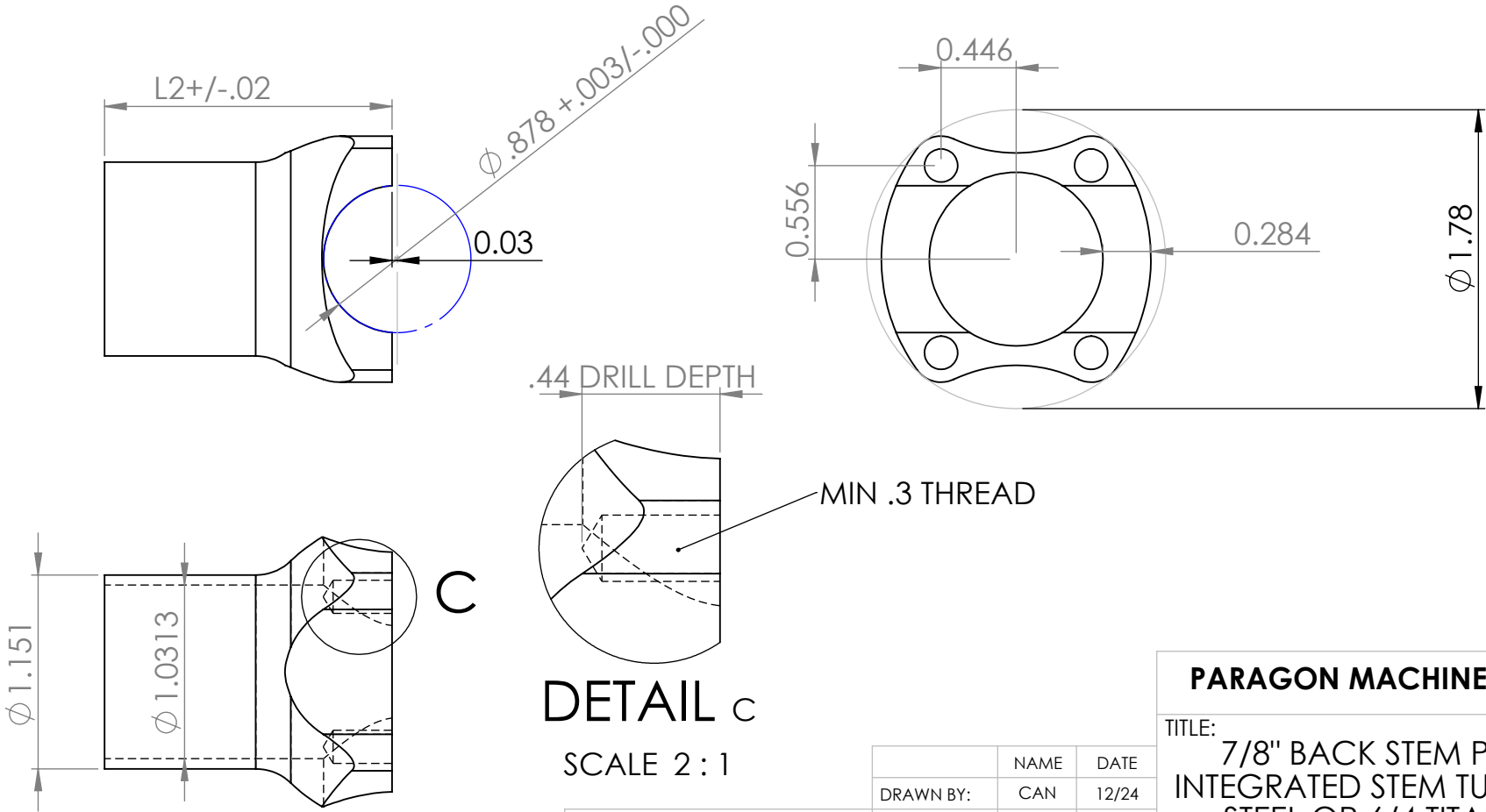


PART NUMBER	NOMINAL LENGTH	L2 (ACTUAL LENGTH)
SP0025; SP2025	60mm	1.737 in (44.13 mm)
SP0027; SP2027	80mm	2.525 in (64.13mm)
SP0029; SP2029	100mm	3.312 in (84.13mm)

DESIGNED FOR 1.250" STEM STEERER CLAMP (R.625" (15.875mm))

SEE CAD FILES FOR DETAILS ON PROFILE OF STEM CLAMP



DETAIL C
SCALE 2 : 1

PROPRIETARY AND CONFIDENTIAL

THE INFORMATION CONTAINED IN THIS DRAWING IS PROVIDED FOR FRAMEBUILDERS AND IS THE PROPERTY OF PARAGON MACHINE WORKS. ANY REPRODUCTION IN PART OR AS A WHOLE WITHOUT THE WRITTEN PERMISSION OF PARAGON MACHINE WORKS IS PROHIBITED.

	NAME	DATE
DRAWN BY:	CAN	12/24
CHECKED BY:	JAS	12/24
COMMENTS:		
BREAK ALL EDGES		

PARAGON MACHINE WORKS		
TITLE: 7/8" BACK STEM PLATE, INTEGRATED STEM TUBE, 4130 STEEL OR 6/4 TITANIUM		
SIZE A	DWG. NO. SPX025_27_29	REV 1
SCALE: 1:1		SHEET 1 OF 1