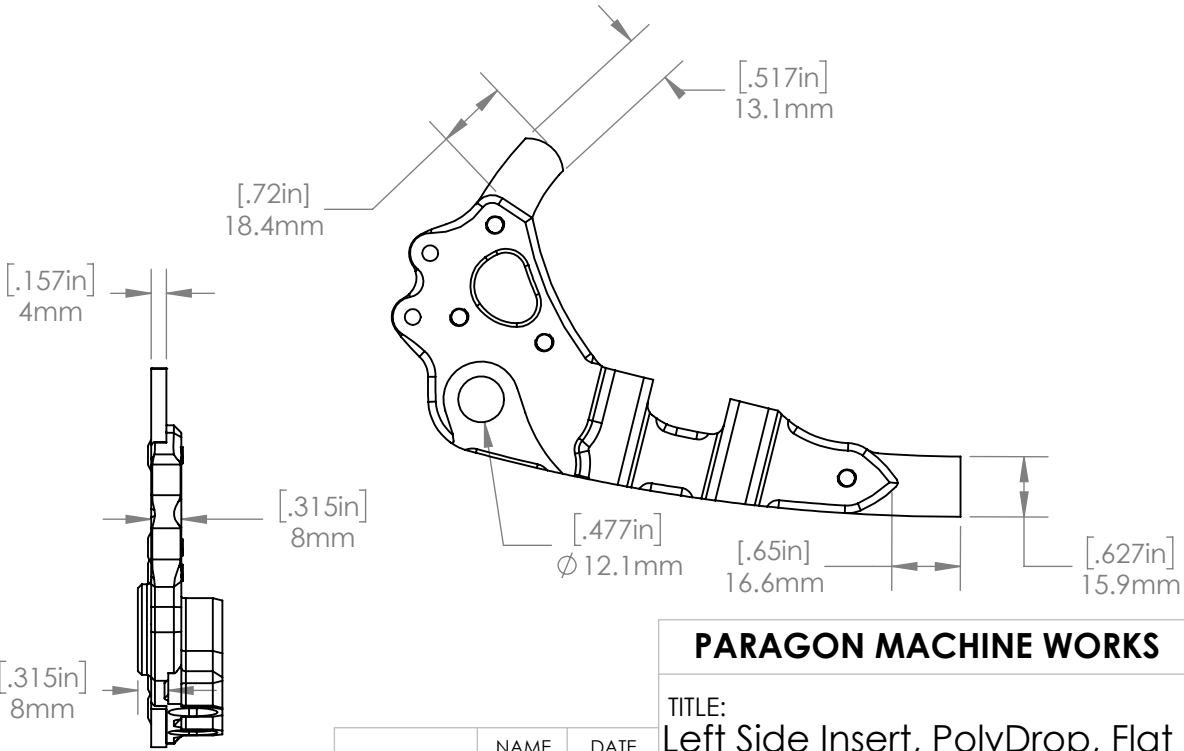
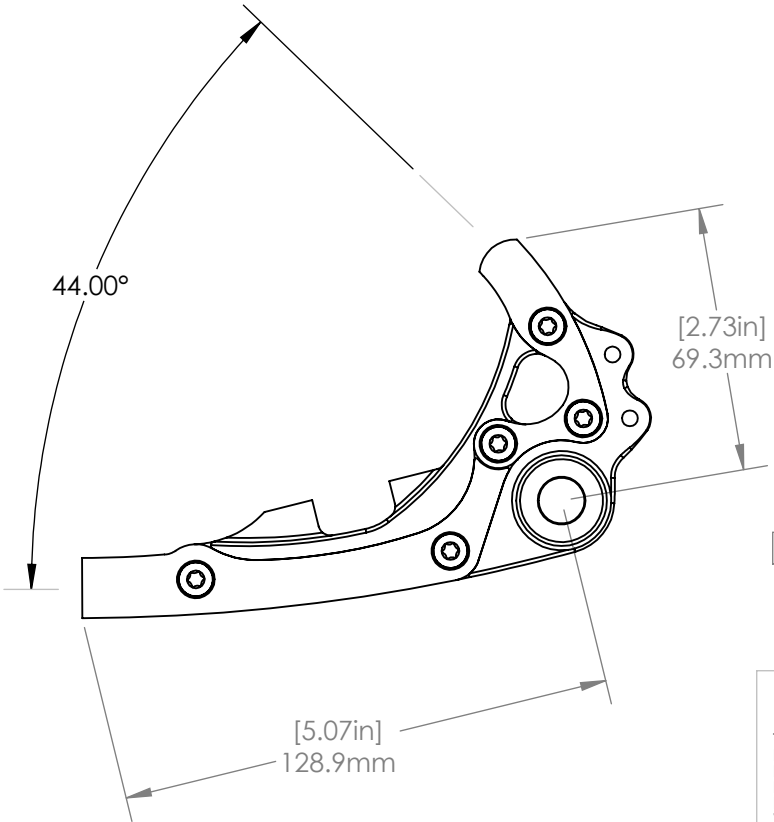
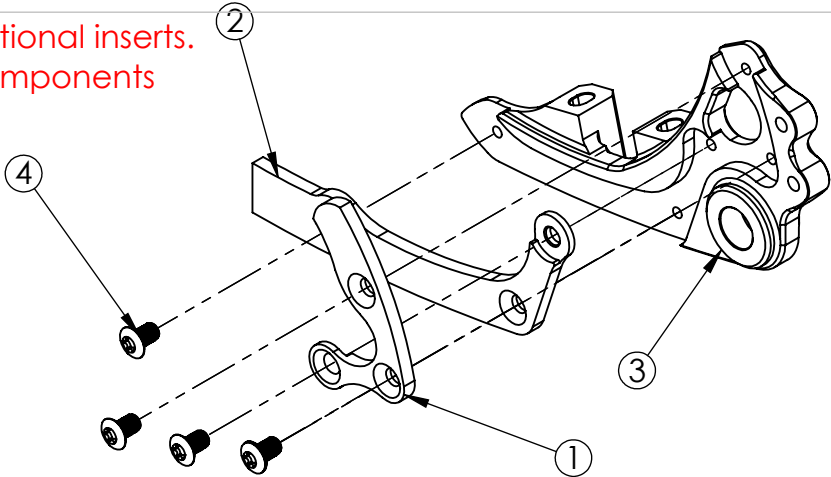


COMPATIBLE FRAME COMPONENTS		
PART NUMBER		DESCRIPTION
PD000		6/4 Titanium
PD100		17/4 Stainless Steel
INSERTS		
PART NUMBER		DESCRIPTION
PA468 (BARE) PB468 (BLACK)		Eyelets
PA466 (BARE) PB466 (BLACK)		No Eyelets
ITEM NO.	PART NO.	EXPLODED VIEW
1	PD000UL	Upper Right Frame Component
2	PD000LL	Lower Right Frame Component
3	PA468	Eyelets
4	PDBOLT	M5 x .8 BHCS, QTY 5/Insert

See website for additional inserts.
Inserts and frame components
sold separately.



**PROPRIETARY AND
CONFIDENTIAL**

THE INFORMATION CONTAINED IN THIS
DRAWING IS PROVIDED FOR
FRAMEBUILDERS AND IS THE PROPERTY OF
PARAGON MACHINE WORKS. ANY
REPRODUCTION IN PART OR AS A WHOLE
WITHOUT THE WRITTEN PERMISSION OF
PARAGON MACHINE WORKS IS PROHIBITED.

	NAME	DATE
DRAWN BY:	CAN	8/2018
CHECKED BY:	MCN	8/2018
MATERIAL: 6061 ALUMINUM GENERAL TOLERANCES: X.X ± 0.020" X.XX ± 0.010" X.XXX ± 0.005"		

PARAGON MACHINE WORKS		
TITLE: Left Side Insert, PolyDrop, Flat Mount For 140 Rotor, Eyelets, 12 mm Hub		
SIZE A	DWG. NO. PA468_PA466	REV A1
SCALE: 1:2		SHEET 1 OF 1