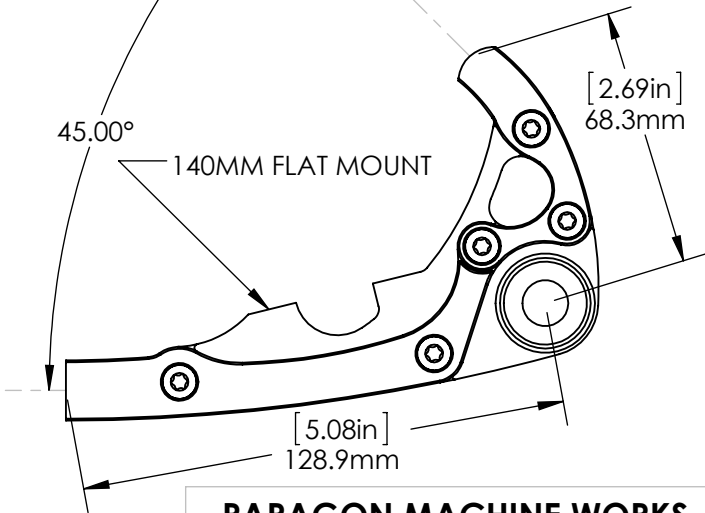
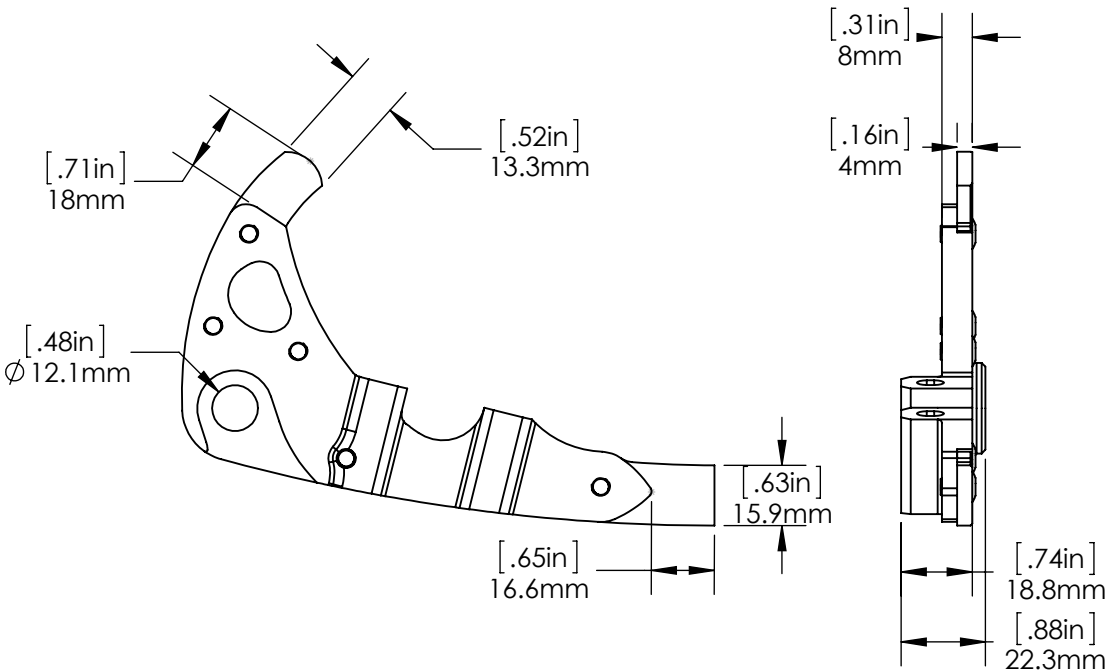
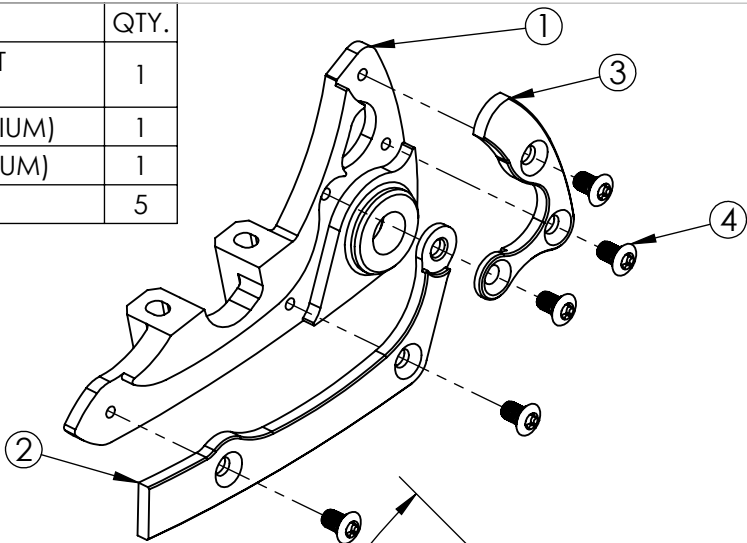


ITEM NO.	PART NUMBER	DESCRIPTION	QTY.
1	PA466	LEFT POLYDROP FLAT MOUNT CALIPER INSERT, 12MM DT SWISS/SHIMANO, NO EYELETS	1
2	PD000LL	POLYDROP LOWER LEFT 45 DEGREE FRAMEPIECE (6-4 TITANIUM)	1
3	PD000UL	POLYDROP UPPER LEFT 45 DEGREE FRAMEPIECE (6-4 TITANIUM)	1
4	M5x8OHCS	M5 x 0.8 OHCS (STEEL)	5



PARAGON MACHINE WORKS

TITLE: LEFT POLYDROP FLAT MOUNT CALIPER INSERT, 12MM DT SWISS/SHIMANO, NO EYELETS

	NAME	DATE
DRAWN BY:	SWS	08/28/15
CHECKED BY:	MCN	08/28/15
MATERIAL: 6061 ALUMINUM		

PROPRIETARY AND CONFIDENTIAL

THE INFORMATION CONTAINED IN THIS DRAWING IS PROVIDED FOR FRAMEBUILDERS AND IS THE PROPERTY OF PARAGON MACHINE WORKS. ANY REPRODUCTION IN PART OR AS A WHOLE WITHOUT THE WRITTEN PERMISSION OF PARAGON MACHINE WORKS IS PROHIBITED.

*NOTE: USE STOCK 25MM (38MM LONG) FLAT MOUNT FIXING BOLTS THAT COME WITH FLAT MOUNT CALIPER

SIZE	DWG. NO.	REV
A	PA466	A1