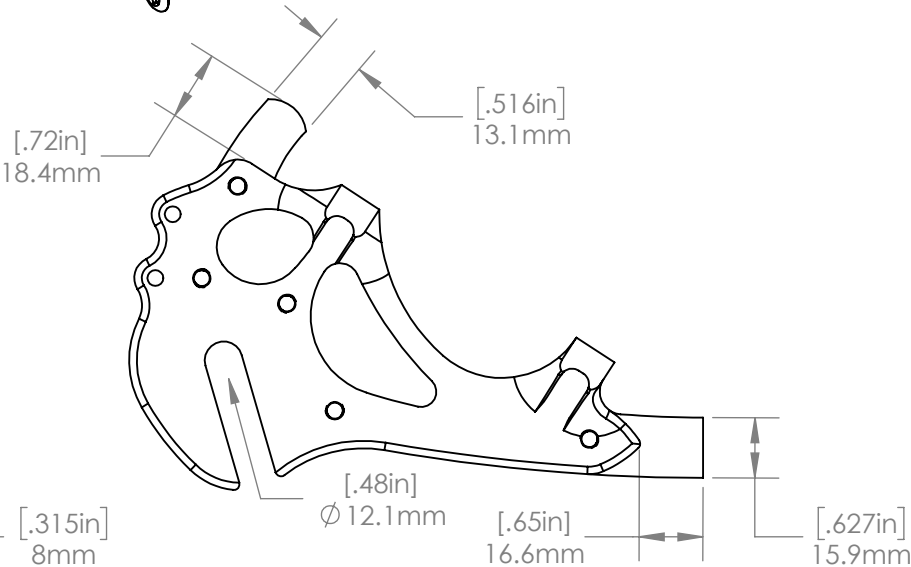
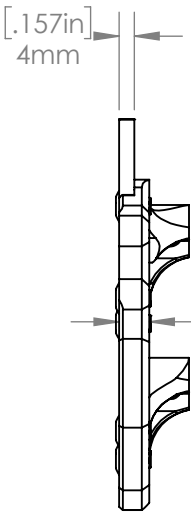
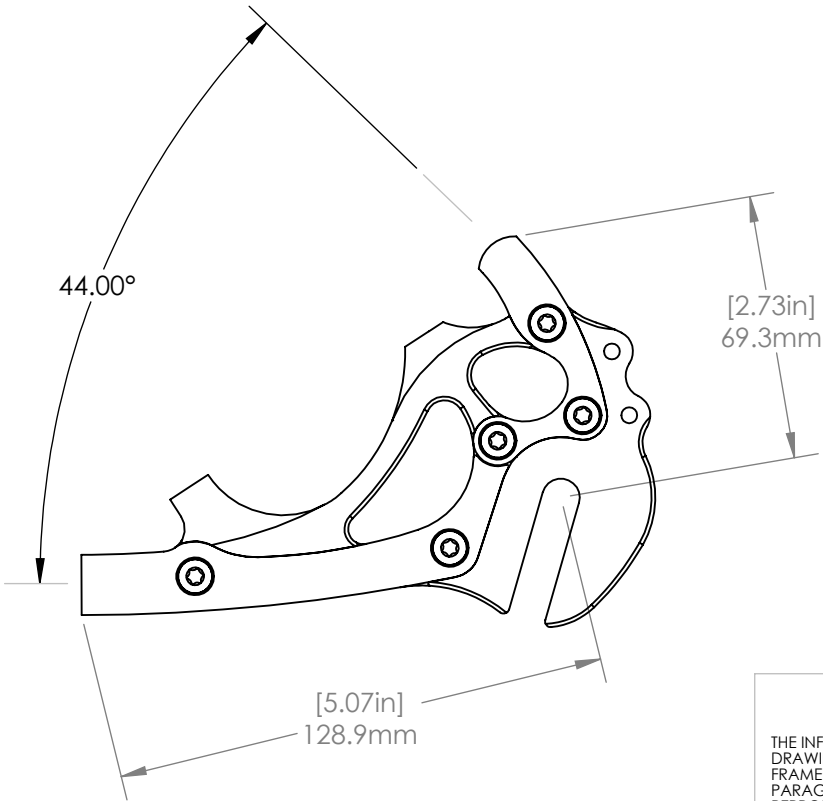
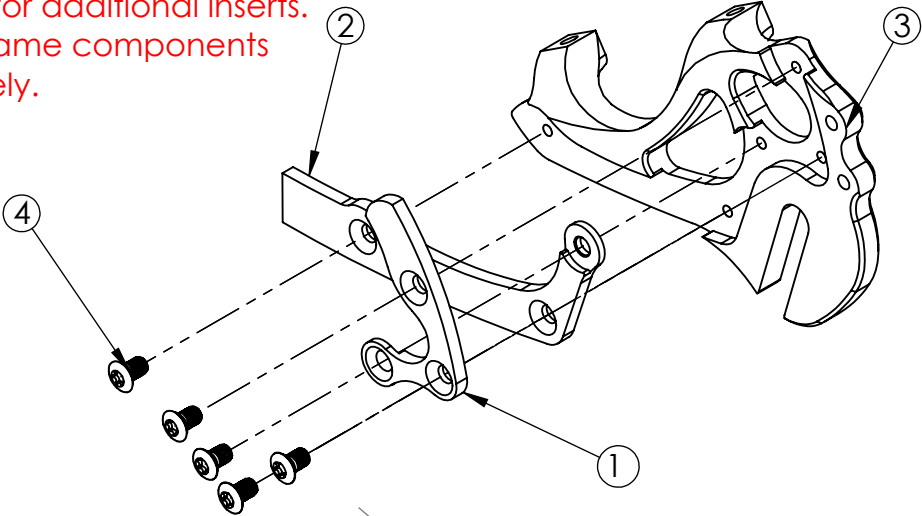


COMPATIBLE FRAME COMPONENTS		
PART NUMBER		DESCRIPTION
PD000		6/4 Titanium
PD100		17/4 Stainless Steel
INSERTS		
PART NUMBER		DESCRIPTION
PA456 (BARE) PB456 (BLACK)		Eyelets
PA452 (BARE) PB452 (BLACK)		No Eyelets
ITEM NO.	PART NO.	EXPLODED VIEW
1	PD000UL	Upper Right Frame Component
2	PD000LL	Lower Right Frame Component
3	PA456	Eyelets
4	PDBOLT	M5 x .8 BHCS, QTY 5/Insert

See website for additional inserts.
Inserts and frame components
sold separately.



**PROPRIETARY AND
CONFIDENTIAL**

THE INFORMATION CONTAINED IN THIS
DRAWING IS PROVIDED FOR
FRAMEBUILDERS AND IS THE PROPERTY OF
PARAGON MACHINE WORKS. ANY
REPRODUCTION IN PART OR AS A WHOLE
WITHOUT THE WRITTEN PERMISSION OF
PARAGON MACHINE WORKS IS PROHIBITED.

	NAME	DATE
DRAWN BY:	CAN	8/2018
CHECKED BY:	MCN	8/2018

MATERIAL:
GENERAL TOLERANCES:
X.X ± 0.020"
X.XX ± 0.010"
X.XXX ± 0.005"

PARAGON MACHINE WORKS		
TITLE: Left Side Insert, PolyDrop, Rohloff, Post Mount For 140 Rotor, Eyelets, 10 mm Hub		
SIZE A	DWG. NO. PA456_PA452	REV A1
SCALE: 1:2		SHEET 1 OF 1