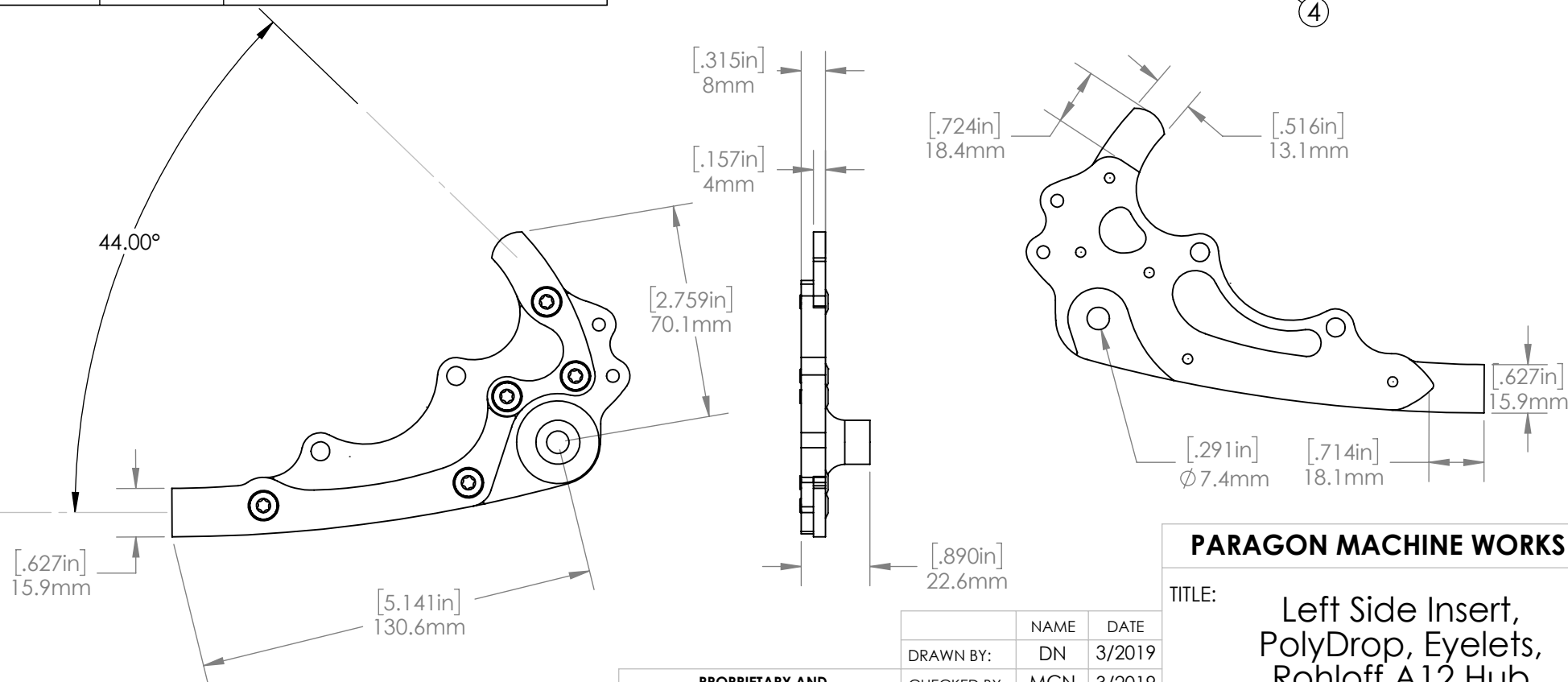
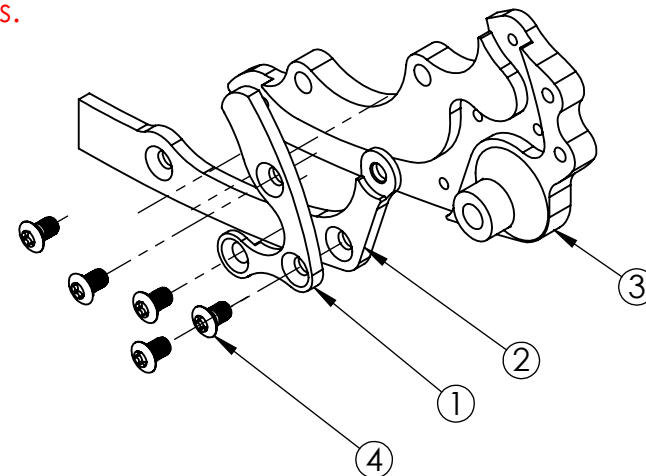


COMPATIBLE FRAME COMPONENTS		
PART NUMBER		DESCRIPTION
PD000		6/4 Titanium
PD100		17/4 Stainless Steel
INSERTS		
PART NUMBER		DESCRIPTION
PA454 (BARE) PB4454 (BLACK)		Eyelets
ITEM NO.	PART NO.	EXPLODED VIEW
1	PD000UL	Upper Left Frame Component
2	PD000LL	Lower Left Frame Component
3	PA454	Eyelets
4	PDBOLT	M5 x .8 BHCS, QTY 5/Insert

See website for additional inserts.  
Inserts and frame components  
sold separately.



**PROPRIETARY AND  
CONFIDENTIAL**

THE INFORMATION CONTAINED IN THIS  
DRAWING IS PROVIDED FOR  
FRAMEBUILDERS AND IS THE PROPERTY OF  
PARAGON MACHINE WORKS. ANY  
REPRODUCTION IN PART OR AS A WHOLE  
WITHOUT THE WRITTEN PERMISSION OF  
PARAGON MACHINE WORKS IS PROHIBITED.

	NAME	DATE
DRAWN BY:	DN	3/2019
CHECKED BY:	MCN	3/2019
MATERIAL: 6061 ALUMINUM		
GENERAL TOLERANCES:		
X.X ± 0.020"		
X.XX ± 0.010"		
X.XXX ± 0.005"		

**PARAGON MACHINE WORKS**

TITLE: Left Side Insert,  
PolyDrop, Eyelets,  
Rohloff A12 Hub

SIZE	DWG. NO.	REV
A	PA454	A1
SCALE: 1:2		SHEET 1 OF 1