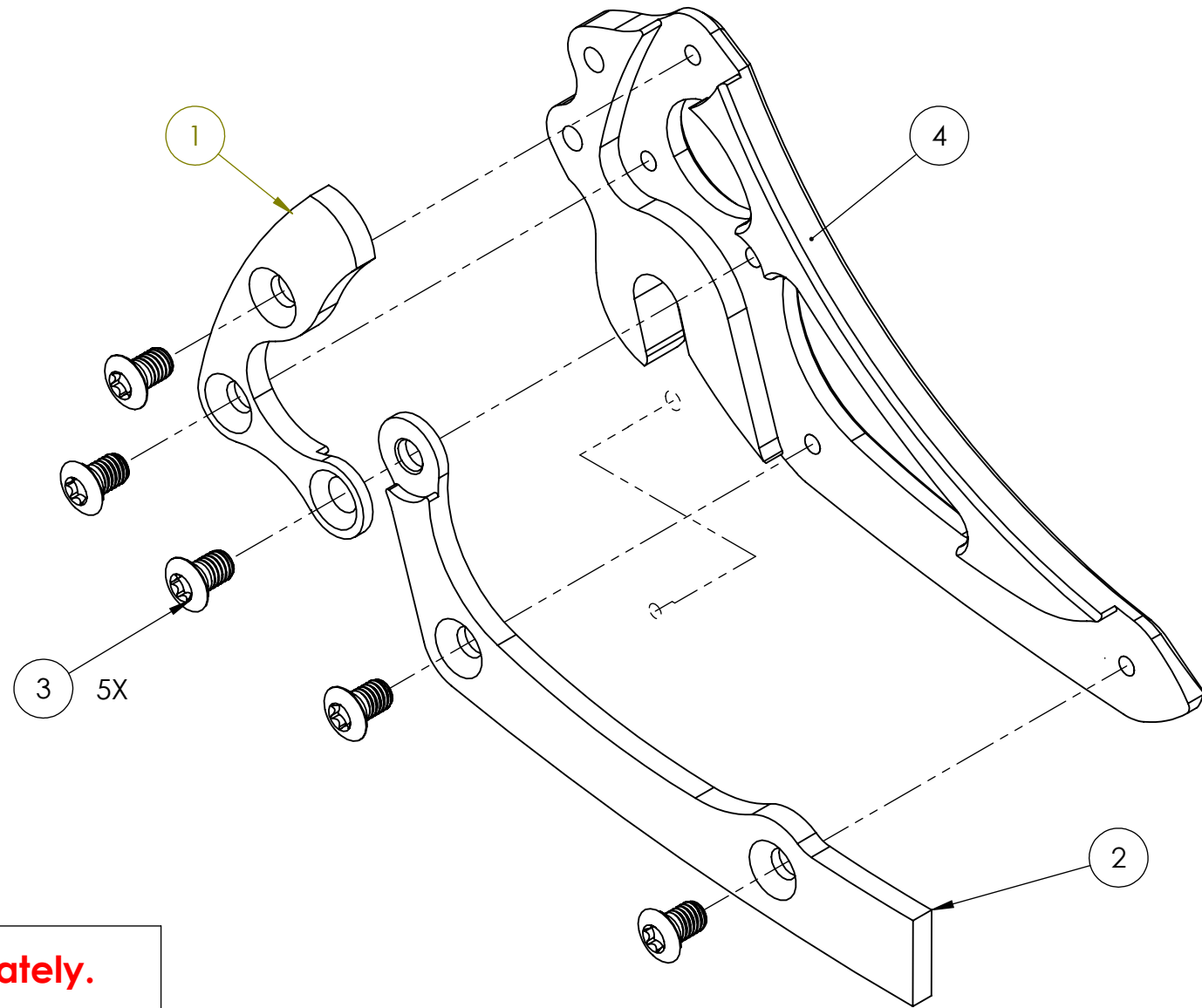
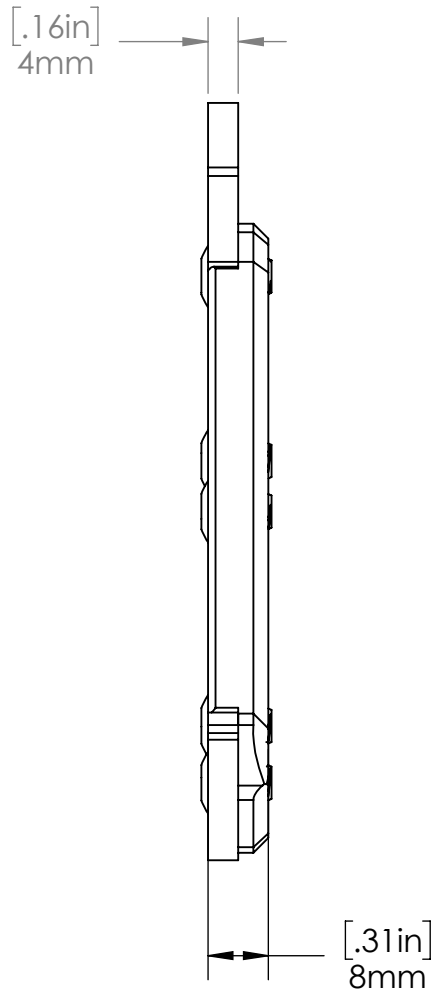
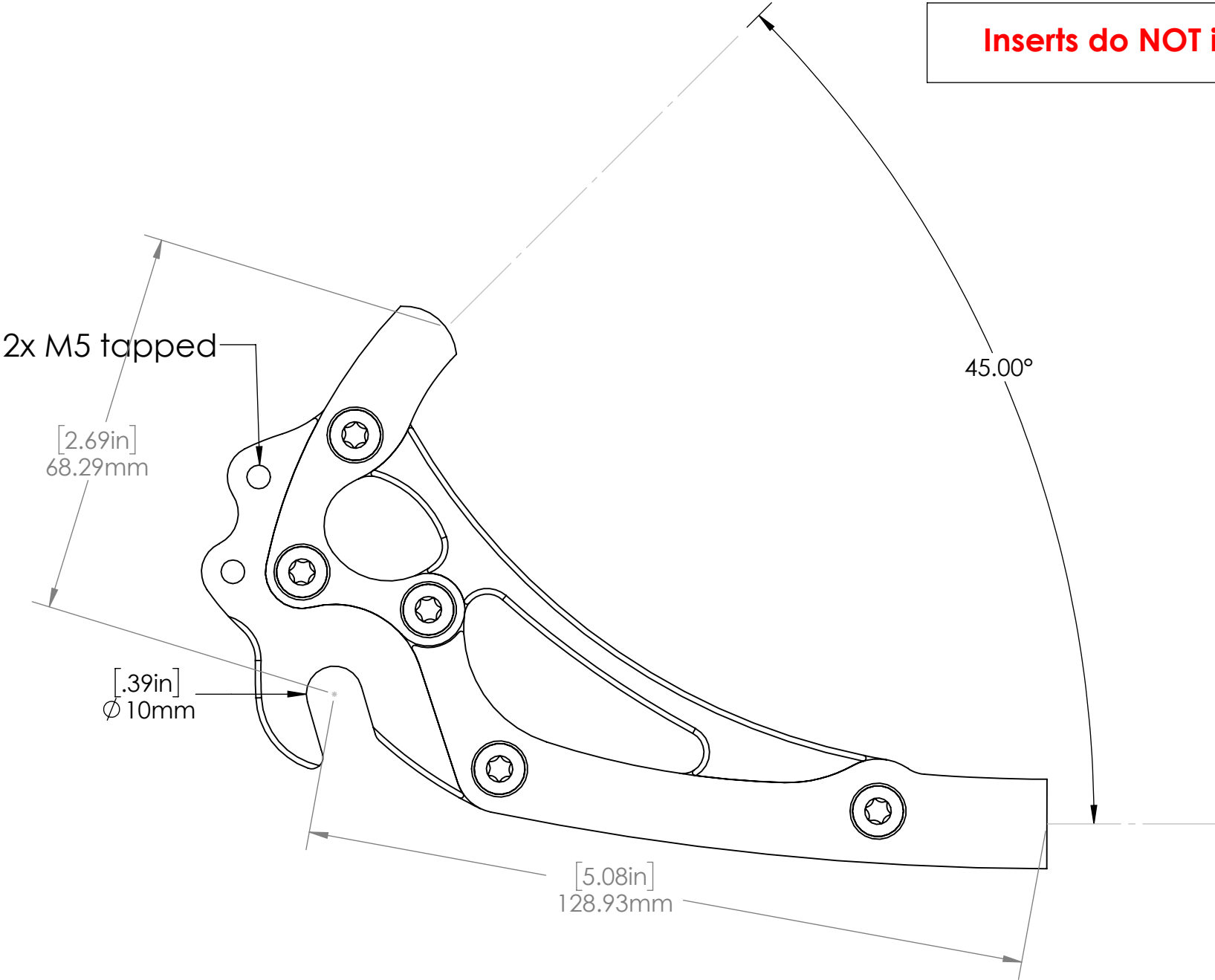


ITEM NO.	PART NUMBER	DESCRIPTION	QTY.
1	PD000UR	PolyDrop upper right 45 degree framepiece (6-4 Titanium)	1
2	PD000LR	PolyDrop lower right 45 degree framepiece (6-4 titanium)	1
3	M5x8OHCS	M5 x 0.8 OHCS (STEEL)	5
4	PA445	PolyDrop 135-10, no hanger, eyelets insert (6061 Al)	1

Check website for additional insert and hardware options.

Inserts do NOT include framepieces. Order seperately.



PROPRIETARY

THE INFORMATION CONTAINED IN THIS DRAWING IS PROVIDED FOR FRAMEBUILDERS AND IS THE SOLE PROPERTY OF PARAGON MACHINE WORKS. ANY REPRODUCTION IN PART OR AS A WHOLE WITHOUT THE WRITTEN PERMISSION OF PARAGON MACHINE WORKS IS PROHIBITED.

		UNLESS OTHERWISE SPECIFIED:		NAME	DATE
		DIMENSIONS ARE IN INCHES	DRAWN	J.McW.	2013
		TOLERANCES:	CHECKED		
		FRACTIONAL ±	ENG APPR:		
		ANGULAR: MACH ±	MFG APPR:		
		TWO PLACE DECIMAL ±	Q.A.		
		THREE PLACE DECIMAL ±	COMMENTS:		
		INTERPRET GEOMETRIC TOLERANCING PER:			
		MATERIAL			
NEXT ASSY	USED ON	FINISH			
APPLICATION		DO NOT SCALE DRAWING			

**Paragon Machine Works**

TITLE:  
**PolyDrop right 135-10  
eyelets, no hanger**

SIZE  
**C**

DWG. NO.  
**PA445**

REV

SCALE: 1:1 | WEIGHT: | SHEET 1 OF 1