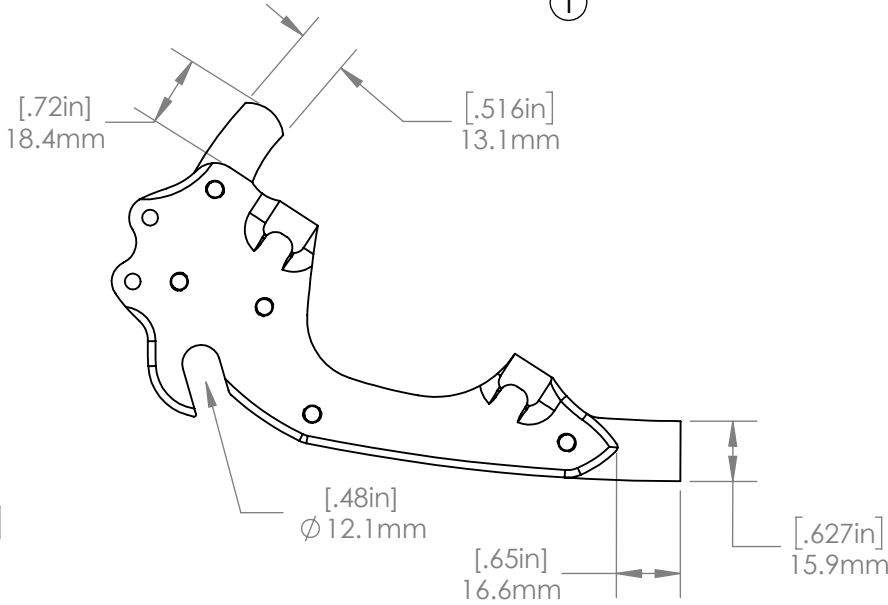
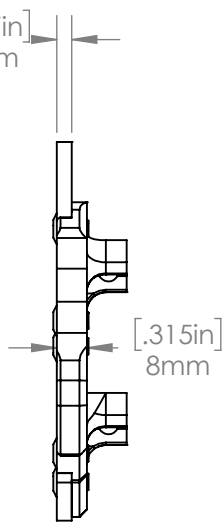
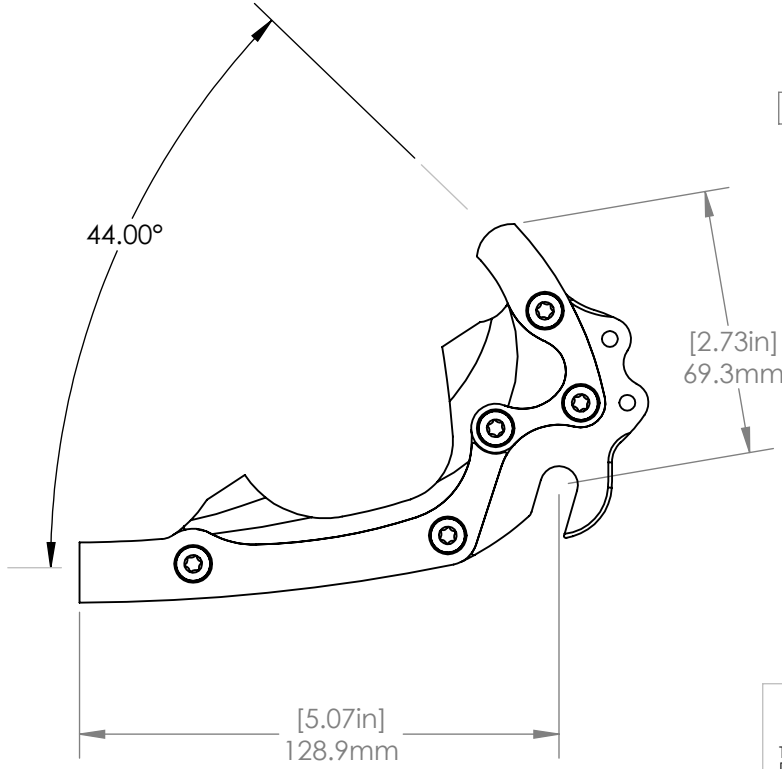
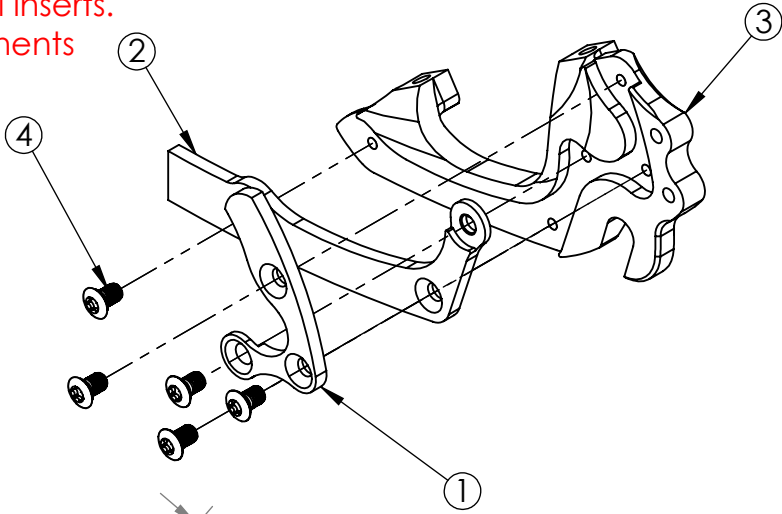


COMPATIBLE FRAME COMPONENTS		
PART NUMBER		DESCRIPTION
PD000		6/4 Titanium
PD100		17/4 Stainless Steel
INSERTS		
PART NUMBER		DESCRIPTION
PA430 (BARE) PB430 (BLACK)		Eyelets
PA420 (BARE) PB420 (BLACK)		No Eyelets
ITEM NO.	PART NO.	EXPLODED VIEW
1	PD000UL	Upper Right Frame Component
2	PD000LL	Lower Right Frame Component
3	PA430	Eyelets
4	PDBOLT	M5 x .8 BHCS, QTY 5/Insert

See website for additional inserts.  
Inserts and frame components  
sold separately.



**PROPRIETARY AND  
CONFIDENTIAL**

THE INFORMATION CONTAINED IN THIS  
DRAWING IS PROVIDED FOR  
FRAMEBUILDERS AND IS THE PROPERTY OF  
PARAGON MACHINE WORKS. ANY  
REPRODUCTION IN PART OR AS A WHOLE  
WITHOUT THE WRITTEN PERMISSION OF  
PARAGON MACHINE WORKS IS PROHIBITED.

	NAME	DATE
DRAWN BY:	CAN	8/2018
CHECKED BY:	MCN	8/2018
<b>MATERIAL:</b> <b>GENERAL TOLERANCES:</b> X.X ± 0.020" X.XX ± 0.010" X.XXX ± 0.005"		

**PARAGON MACHINE WORKS**

TITLE:  
Left Side Insert, PolyDrop,  
Post Mount For 140 Rotor,  
Eyelets, 10 mm Hub

SIZE	DWG. NO.	REV
<b>A</b>	<b>PA430_PA420</b>	<b>A1</b>
SCALE: 1:2		SHEET 1 OF 1