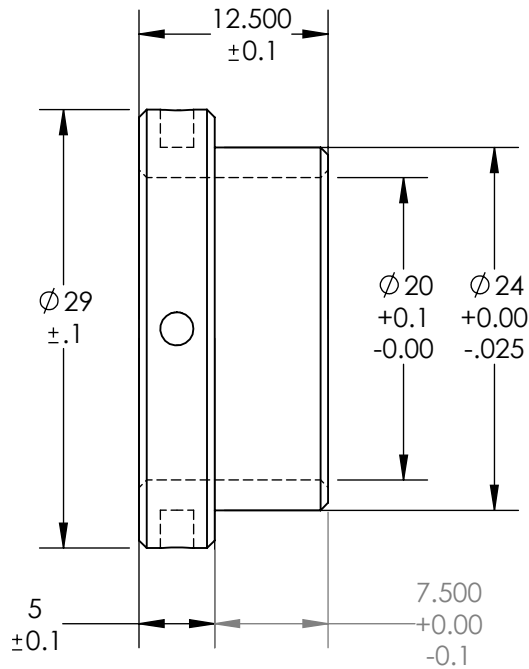
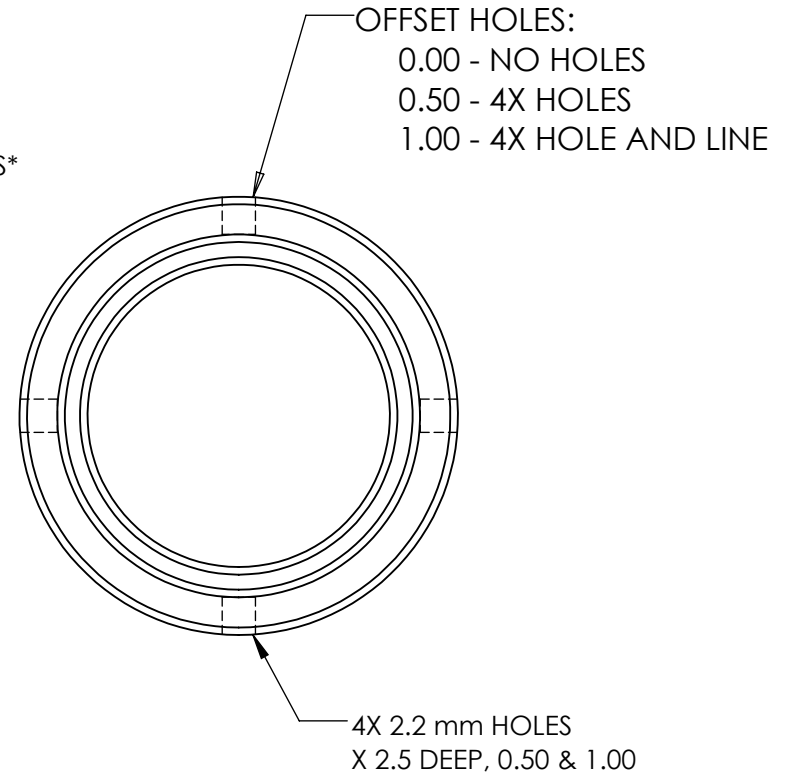


OFFSET (mm)	PART # (6/4)	PART # (303)	IDENTIFICATION
0.00	MS0081	MS1081	NO EXTERNAL MARKINGS
0.50	MS0082	MS1082	FOUR 2.2 mm RADIAL HOLES
1.00	MS0083	MS1083	FOUR 2.2 mm RADIAL HOLES AND A SINGLE GROOVE ON THE 24 MM DIAMETER



BREAK ALL EDGES



PARAGON MACHINE WORKS

TITLE: BUSHING FOR ROUND, REAR SRAM UDH/T-TYPE DROPOUT, CONCENTRIC AND ECENTRIC

	NAME	DATE
DRAWN BY:	CAN	7/23
CHECKED BY:		

MATERIAL: 6/4 OR 303
 GENERAL TOLERANCES:
 X.X ± 0.020"
 X.XX ± 0.010"
 X.XXX ± 0.005"

PROPRIETARY AND CONFIDENTIAL
 THE INFORMATION CONTAINED IN THIS DRAWING IS PROVIDED FOR FRAMEBUILDERS AND IS THE PROPERTY OF PARAGON MACHINE WORKS. ANY REPRODUCTION IN PART OR AS A WHOLE WITHOUT THE WRITTEN PERMISSION OF PARAGON MACHINE WORKS IS PROHIBITED.

SIZE	DWG. NO.	REV
A	MS0081_83	A1

SCALE: 2:1

SHEET 1 OF 1