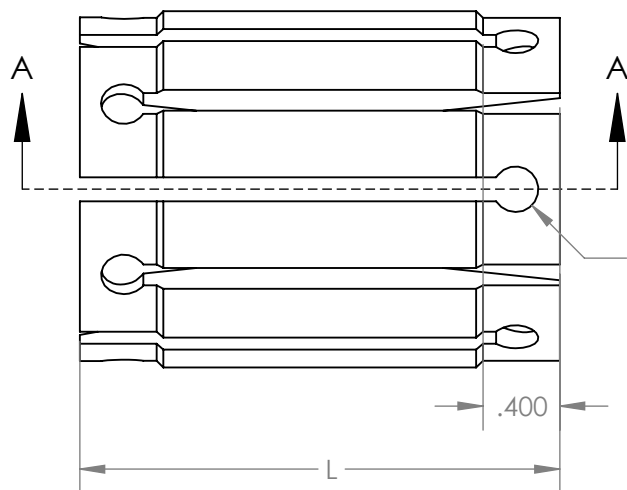


SECTION A-A

1/8" or 5/32"

taper is correct when purge cone
sits .005" to .010" outboard from edge



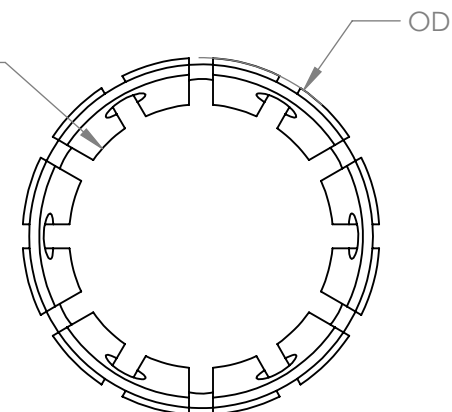
Ø .238
equally spaced

.400

L

Part Number	L	S	ID	OD
FT5012	2.500"	1.340"	.900"	1.390"
FT5014	2.500"	1.790"	1.375"	1.860"
FT5015	3.130"	1.790"	1.375"	1.860"
FT5019	3.465"	1.790"	1.375"	1.860"
FT5016	3.760"	1.790"	1.375"	1.860"
FT5017	3.760"	1.340"	.900"	1.390"
FT5011	4.345"	1.790"	1.375"	1.860"
FT5018	4.345"	1.340"	.900"	1.390"

ID
+/- .003 for 2nd OP
plug fit



PARAGON MACHINE WORKS

TITLE:

HEAT SINK CENTER

	NAME	DATE
DRAWN BY:	L.L	7/22
CHECKED BY:		

MATERIAL:
GENERAL TOLERANCES:
X.X ± 0.020"
X.XX ± 0.010"
X.XXX ± 0.005"

PROPRIETARY AND CONFIDENTIAL

THE INFORMATION CONTAINED IN THIS
DRAWING IS PROVIDED FOR
FRAMEBUILDERS AND IS THE PROPERTY OF
PARAGON MACHINE WORKS. ANY
REPRODUCTION IN PART OR AS A WHOLE
WITHOUT THE WRITTEN PERMISSION OF
PARAGON MACHINE WORKS IS PROHIBITED.

SIZE	DWG. NO.	REV
A	FT501X	A1

SCALE: 1:1

SHEET 1 OF 1