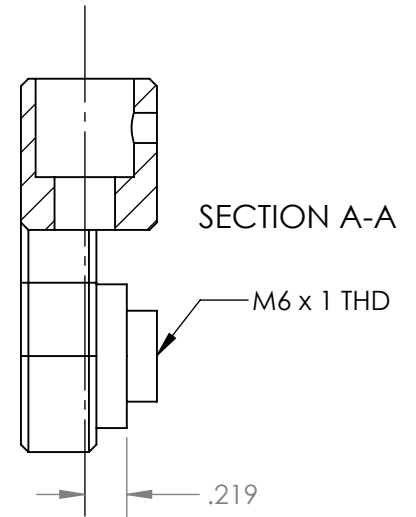
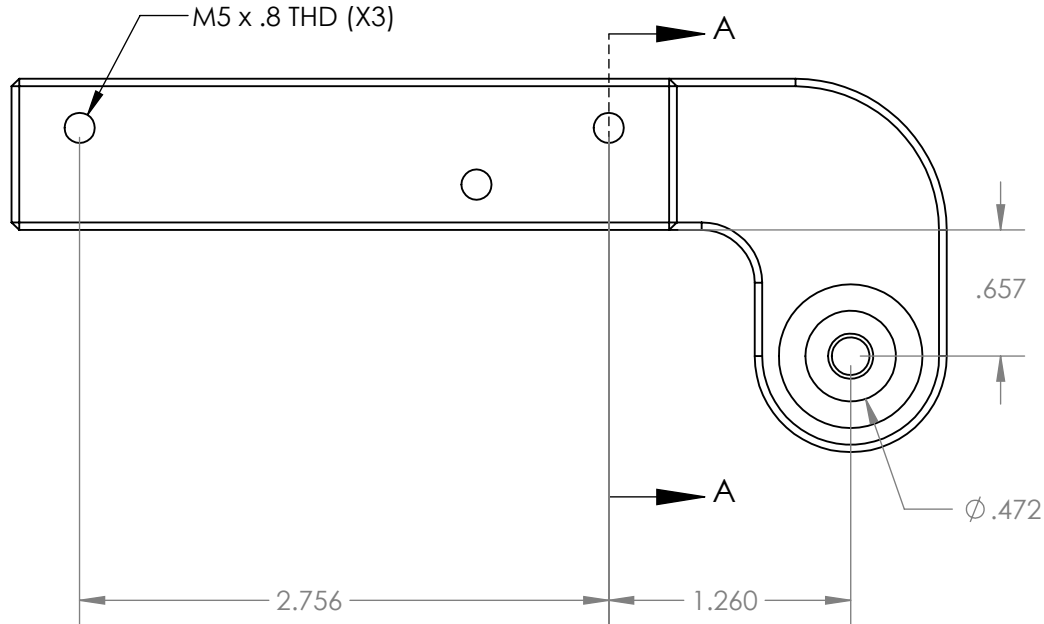
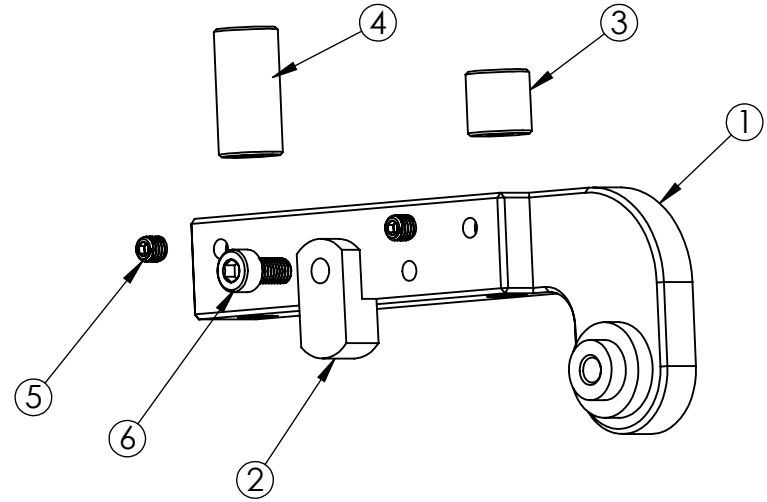


PART #	DESCRIPTION	MATERIAL	NUMBER
FT1205	FFM FIXTURE 160/180	303 SS	1
FT1206	ROTATIONAL STOP	17/4 SS	2
FT1203	5mm BUSHING	303 SS	3
FT1204	5/16" BUSHING	303 SS	4
	5mm SET SCREW	STEEL	5
	M5 x 10 SHCS	STEEL	6



PARAGON MACHINE WORKS

TITLE:
**FIXTURE ASSEMBLY
 FOR DR2102, DR2104**

	NAME	DATE
DRAWN BY:	L.L	10/23
CHECKED BY:		

**PROPRIETARY AND
 CONFIDENTIAL**

THE INFORMATION CONTAINED IN THIS
 DRAWING IS PROVIDED FOR
 FRAMEBUILDERS AND IS THE PROPERTY OF
 PARAGON MACHINE WORKS. ANY
 REPRODUCTION IN PART OR AS A WHOLE
 WITHOUT THE WRITTEN PERMISSION OF
 PARAGON MACHINE WORKS IS PROHIBITED.

MATERIAL:
GENERAL TOLERANCES:
 X.X ± 0.020"
 X.XX ± 0.010"
 X.XXX ± 0.005"

SIZE	DWG. NO.	REV
A	FT1202	

SCALE: 1:1

SHEET 1 OF 1