

4

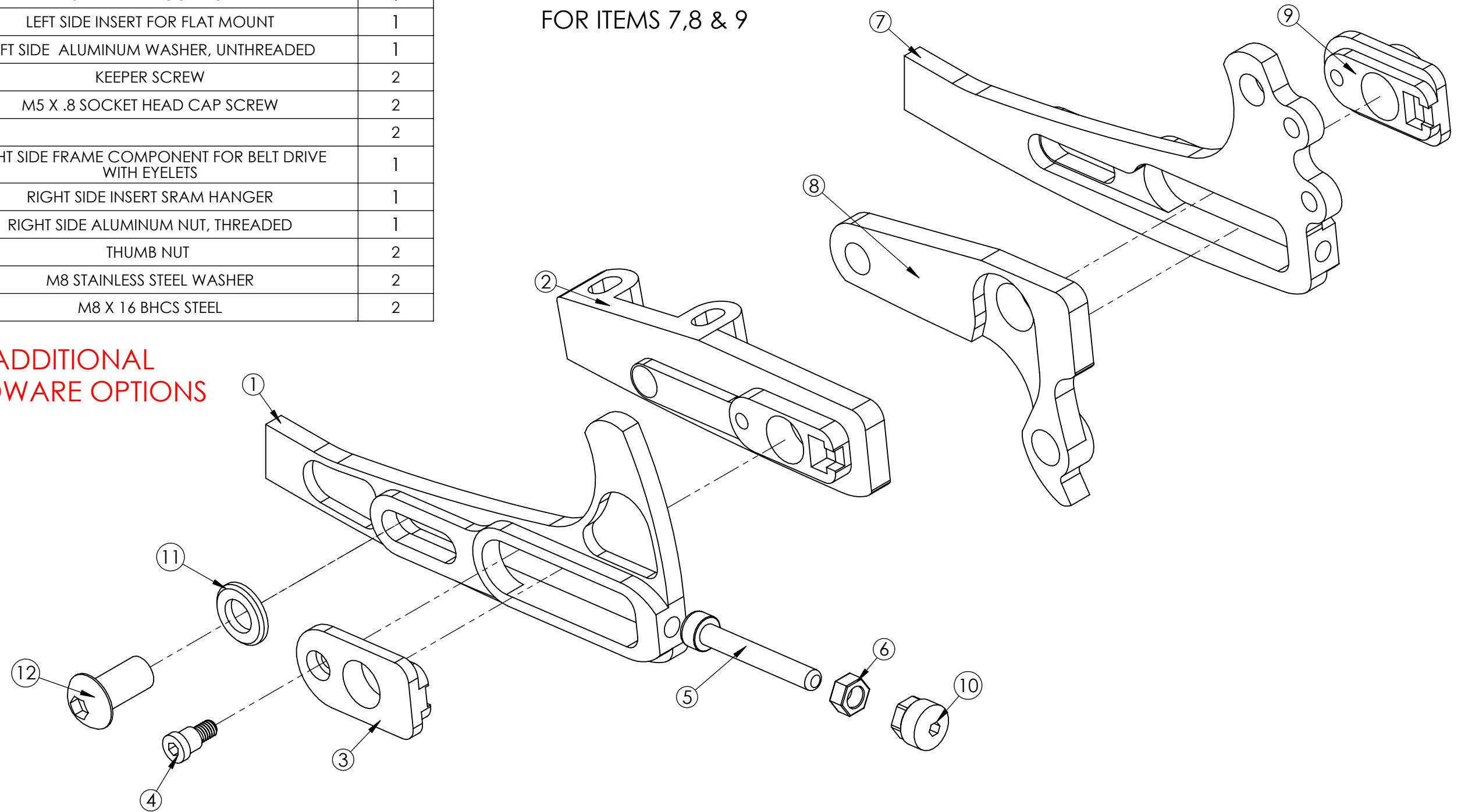
3

2

1

ITEM NO.	PART NUMBER	DESCRIPTION	QTY.
1	DS1005L	LEFT SIDE FRAME COMPONENT	1
2	DR4060	LEFT SIDE INSERT FOR FLAT MOUNT	1
3	MS4002	LEFT SIDE ALUMINUM WASHER, UNTHREADED	1
4	MS5002	KEEPER SCREW	2
5	MS2013	M5 X .8 SOCKET HEAD CAP SCREW	2
6	5mm JAM NUT		2
7	DS1006RBD	RIGHT SIDE FRAME COMPONENT FOR BELT DRIVE WITH EYELETS	1
8	DR4068	RIGHT SIDE INSERT SRAM HANGER	1
9	MS4003	RIGHT SIDE ALUMINUM NUT, THREADED	1
10	MS5003	THUMB NUT </td <td>2</td>	2
11	MS1014	M8 STAINLESS STEEL WASHER	2
12	MS2015	M8 X 16 BHCS STEEL	2

HARDWARE NOT SHOWN FOR ITEMS 7,8 & 9



SEE WEBSITE FOR ADDITIONAL INSERT AND HARDWARE OPTIONS

PROPRIETARY AND CONFIDENTIAL
 THE INFORMATION CONTAINED IN THIS DRAWING IS THE SOLE PROPERTY OF <INSERT COMPANY NAME HERE>. ANY REPRODUCTION IN PART OR AS A WHOLE WITHOUT THE WRITTEN PERMISSION OF <INSERT COMPANY NAME HERE> IS PROHIBITED.

		UNLESS OTHERWISE SPECIFIED:	NAME	DATE	PARAGON MACHINE WORKS	
		DIMENSIONS ARE IN INCHES	DRAWN	L.L.	9/20	TITLE: DEDICATED 12MM SLIDING DROPOUT
		TOLERANCES:	CHECKED			
		FRACTIONAL ±	ENG APPR.			
		ANGULAR: MACH ± BEND ±	MFG APPR.			
		TWO PLACE DECIMAL ±	Q.A.			SIZE DWG. NO. REV
		THREE PLACE DECIMAL ±	COMMENTS:			B DS1005
NEXT ASSY	USED ON	MATERIAL				SCALE: 1:1 WEIGHT: SHEET 1 OF 1
APPLICATION		FINISH				
		DO NOT SCALE DRAWING				

4

3

2

1

B

B

A

A