

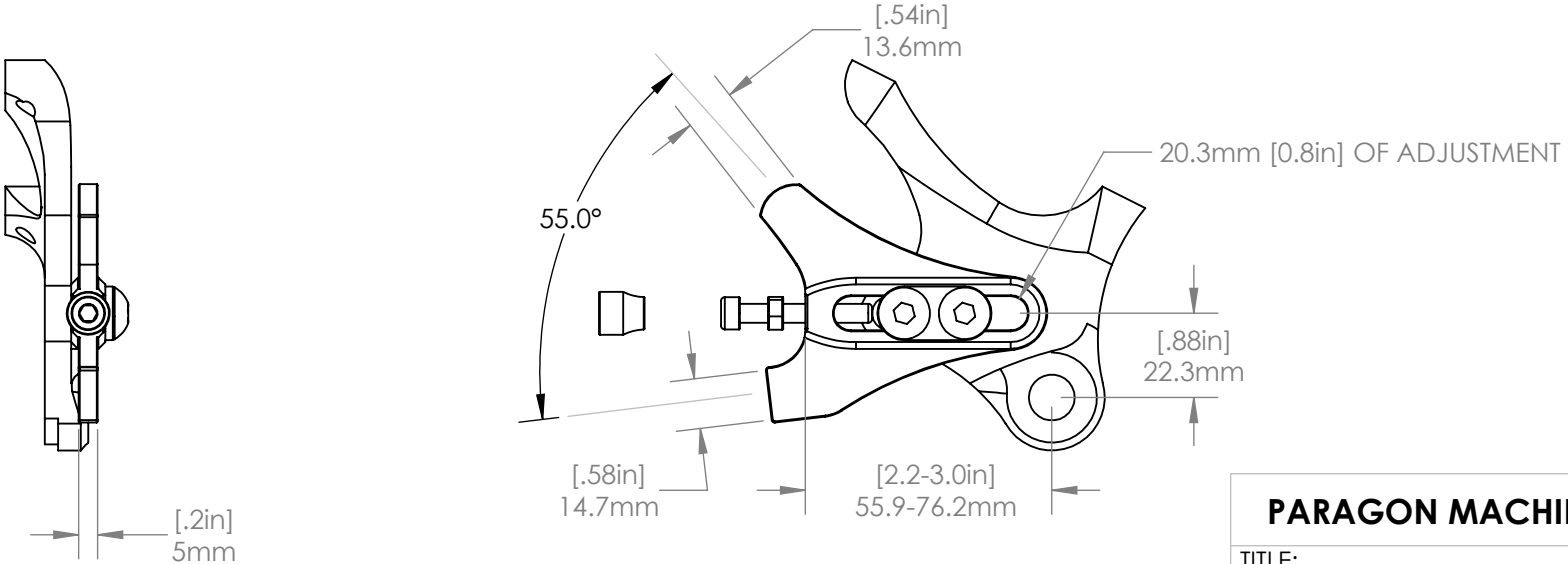
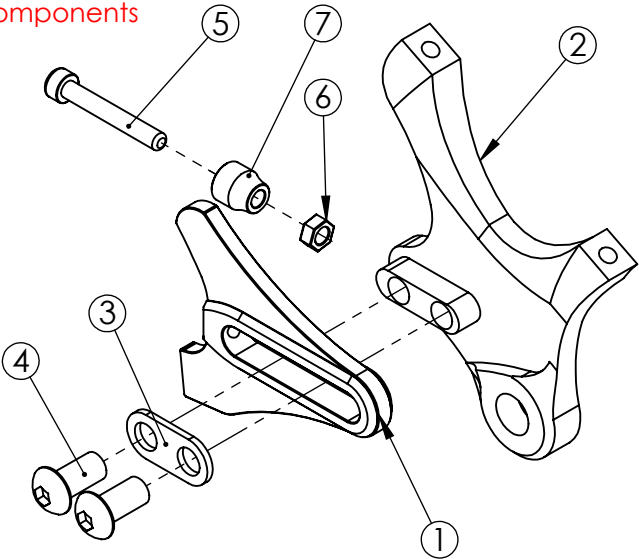
EXPLODED VIEW

ITEM NO.	PART NO.	DESCRIPTION	MATERIAL
1	DS0004	Flat	6/4 Titanium
2	DR4148 (Bare) B4148 (Black)	Post Mount, 180 Rotor	6061 Aluminum
3	MS1013	Double Washer	Stainless Steel
4	MS2012	M8 x 1.25 x 18 BHCS	Steel
5	MS2013	M5 x 0.8 SHCS	Steel
6	MS2016	M5 Hex Nut	Steel
7	MS5001	BRASS THUMB NUT	Brass

COMPATIBLE FRAME COMPONENTS

6/4 TITANIUM	17/4 STAINLESS	DESCRIPTION
DS0001	DS1001, DS1007	Flanged
DS0004	DS1004	Flat
DS0004BD	DS1004BD	Flat, Belt Drive

See website for additional inserts.
Inserts and frame components
sold separately.



PROPRIETARY AND
CONFIDENTIAL

THE INFORMATION CONTAINED IN THIS
DRAWING IS PROVIDED FOR
FRAMEBUILDERS AND IS THE PROPERTY OF
PARAGON MACHINE WORKS. ANY
REPRODUCTION IN PART OR AS A WHOLE
WITHOUT THE WRITTEN PERMISSION OF
PARAGON MACHINE WORKS IS PROHIBITED.

	NAME	DATE
DRAWN BY:	L.L	3/24
CHECKED BY:		
MATERIAL: 6061 ALUMINUM		
GENERAL TOLERANCES		
X.X ± 0.020"		
X.XX ± 0.010"		
X.XXX ± 0.005"		

PARAGON MACHINE WORKS

TITLE:
Left Side Insert, Sliding,
Post Mount, 180 Rotor,
12 mm Hub

SIZE	DWG. NO.	REV
A	DR4148	A1