

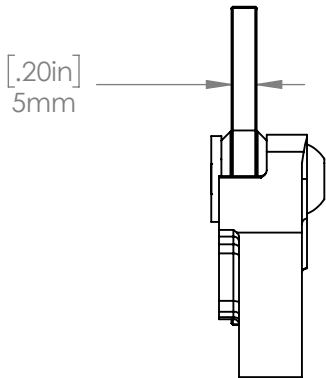
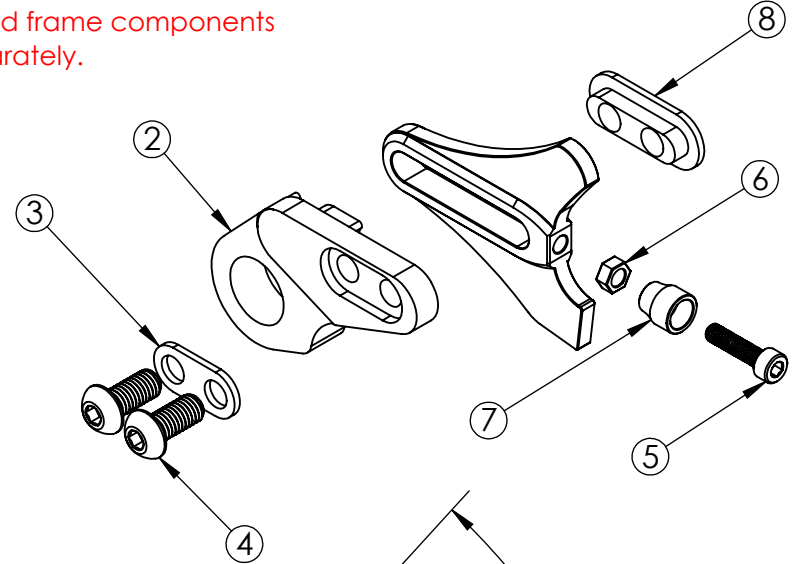
EXPLODED VIEW

ITEM NO.	PART NO.	DESCRIPTION	MATERIAL
1	DS0004	Flat	6/4 Titanium
2	B4145 (Black) DR4145 (Bare)	T-Type insert	6061 Aluminum
3	MS1013	Double Washer	Stainless Steel
4	MS2012	M8 x 1.25 x 18 BHCS	Zinc Plated Steel
5	MS2013	M5 x 0.8 SHCS	Steel
6	MS2016	M5 Hex Nut	Steel
7	MS5001	Brass Thumb Nut	Brass
8	MS1020	Double Nut	Stainless Steel

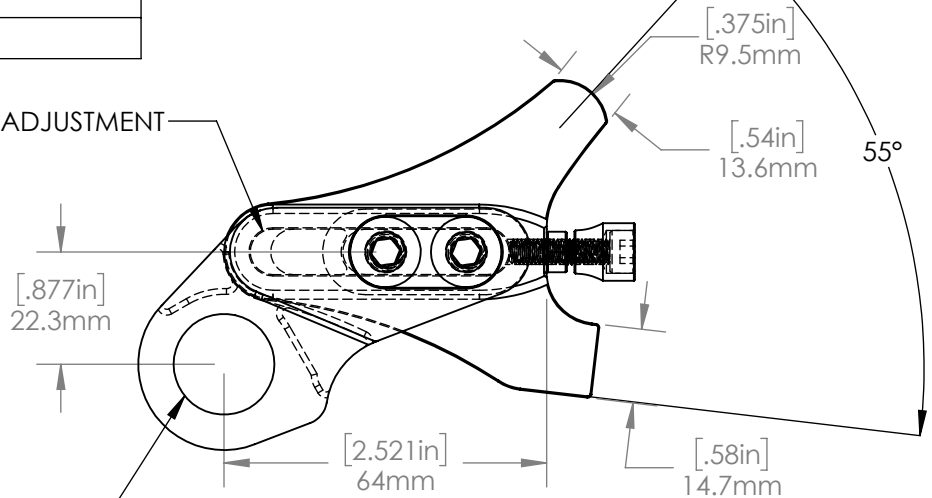
COMPATIBLE FRAME COMPONENTS

6/4 TITANIUM	17/4 STAINLESS	DESCRIPTION
DS0001	DS1001, DS1007	Flanged
DS0004	DS1004	Flat
DS0004BD	DS1004BD	Flat, Belt Drive

See website for additional inserts.
Inserts and frame components
sold separately.



4mm [.16in] OF ADJUSTMENT



IMPORTANT
Axle centerline is shifted 9mm back compared to all other inserts.

PROPRIETARY AND CONFIDENTIAL

THE INFORMATION CONTAINED IN THIS DRAWING IS PROVIDED FOR FRAMEBUILDERS AND IS THE PROPERTY OF PARAGON MACHINE WORKS. ANY REPRODUCTION IN PART OR AS A WHOLE WITHOUT THE WRITTEN PERMISSION OF PARAGON MACHINE WORKS IS PROHIBITED.

	NAME	DATE
DRAWN BY:	L.L	5/23
CHECKED BY:		
MATERIAL: 6061 ALUMINUM		
GENERAL TOLERANCES		
X.X ± 0.020"		
X.XX ± 0.010"		
X.XXX ± 0.005"		

PARAGON MACHINE WORKS

TITLE:
Right Side Insert, Sliding,
T-Type derailleur,
12 mm Hub

SIZE	DWG. NO.	REV
A	DR4145	A1

SCALE: 2:3

SHEET 2 OF 1