

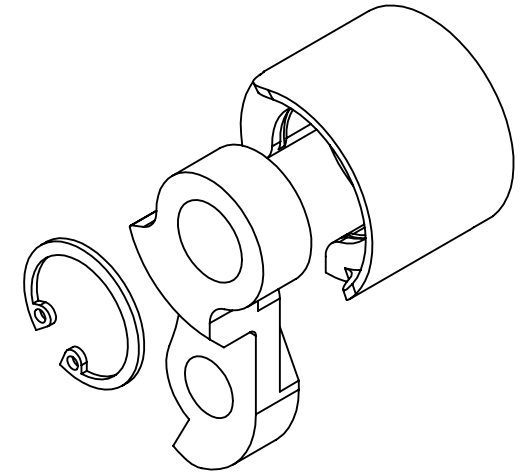
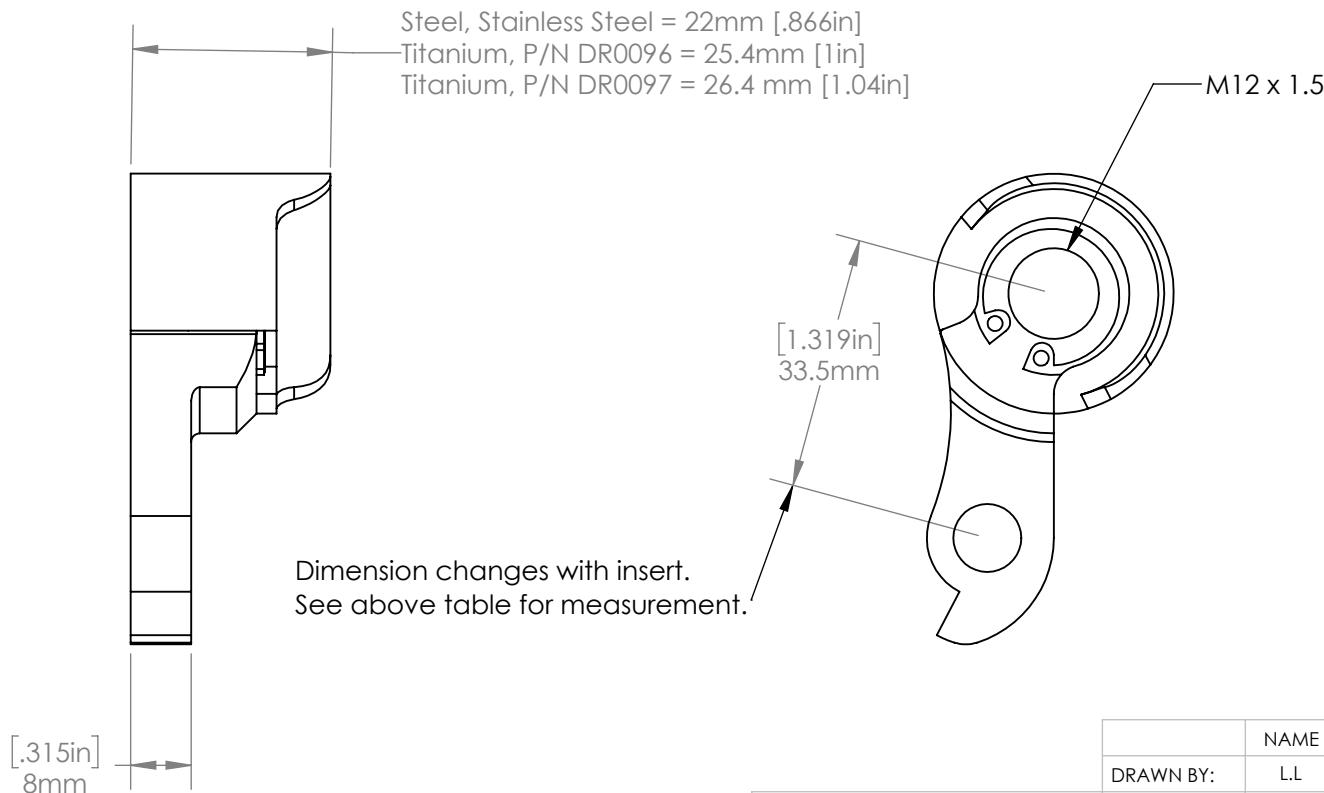
6061 Aluminum M12 x 1.5 Insert Options for Round, Rear Snap Ring Dropouts

Part Number	Description	Axle Center to Hanger Center
B4085 (Black) DR4085 (Bare)	Traditional Hanger	29.5 mm 1.16 in
B4086 (Black) DR4086 (Bare)	Hanger for SRAM Derailleur (shown)	33.5 mm 1.32 in
B4087 (Black) DR4087 (Bare)	Shimano Direct Mount MTN Hanger	44.3 mm 1.74 in
B4088 (Black) DR4088 (Bare)	Shimano Direct Mount Road Hanger	47.4 mm 1.87 in

Compatible Frame Components

Part No.	Material	Description
DR1095	17/4 Stainless Steel	1" OD
DR2095	1018 Steel	1" OD
DR0096	6/4 Titanium	1-1/8" OD
DR1096	17/4 Stainless Steel	1-1/8" OD
DR2096	1018 Steel	1-1/8" OD
DR0097	6/4 Titanium	1-1/4" OD

Exploded View



PROPRIETARY AND CONFIDENTIAL

THE INFORMATION CONTAINED IN THIS DRAWING IS PROVIDED FOR FRAMEBUILDERS AND IS THE PROPERTY OF PARAGON MACHINE WORKS. ANY REPRODUCTION IN PART OR AS A WHOLE WITHOUT THE WRITTEN PERMISSION OF PARAGON MACHINE WORKS IS PROHIBITED.

	NAME	DATE
DRAWN BY:	L.L	6/2021
CHECKED BY:	MCN	6/2021
MATERIAL: 6061 ALUMINUM		
GENERAL TOLERANCES		
X.X ± 0.020"		
X.XX ± 0.010"		
X.XXX ± 0.005"		

PARAGON MACHINE WORKS

TITLE: M12 x 1.5 INSERTS,
ROUND, REAR
SNAP RING DROPOUTS

SIZE	DWG. NO.	REV
A	DR4085_6_7_8	A1

SCALE: 2:3

SHEET 1 OF 1