

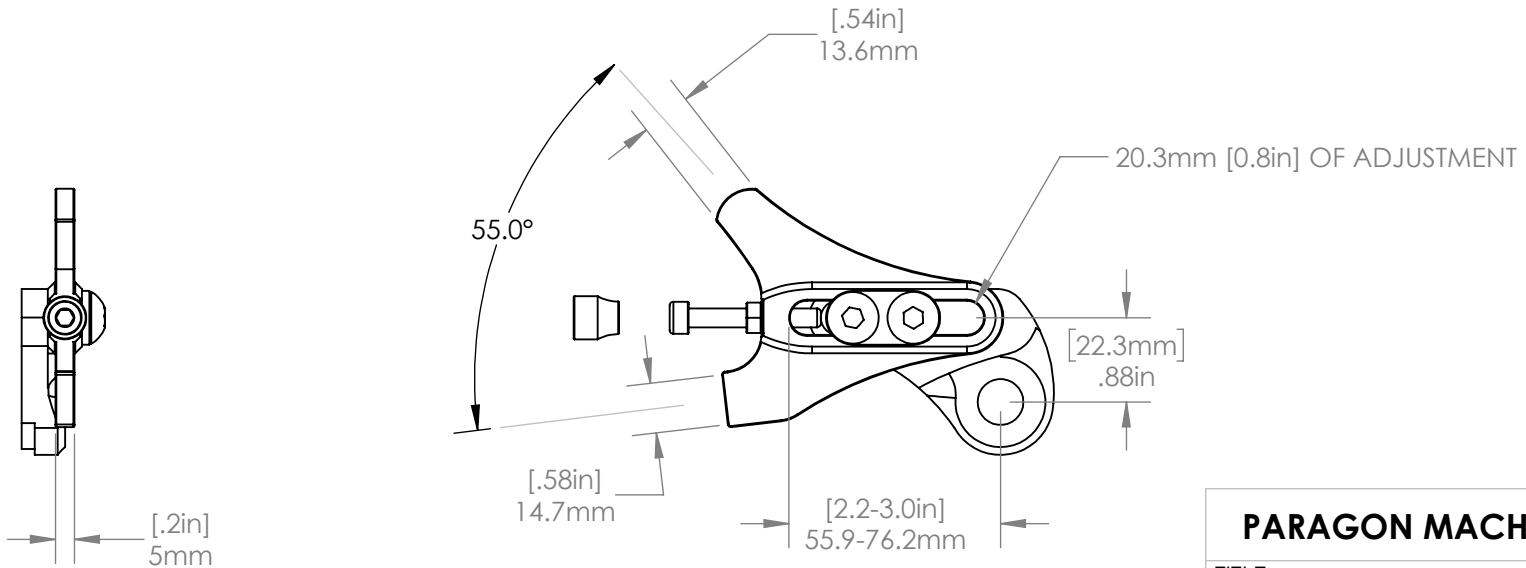
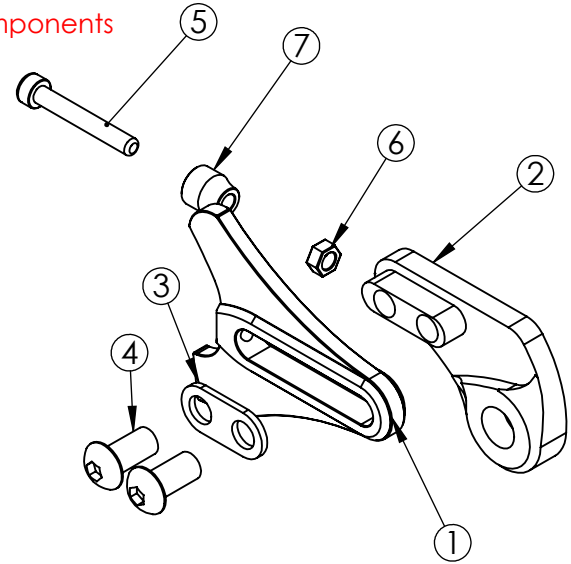
EXPLODED VIEW

| ITEM NO. | PART NO. | DESCRIPTION | MATERIAL |
|----------|--------------------------------|---------------------|-----------------|
| 1 | DS0004 | Flat | 6/4 Titanium |
| 2 | DR4075 (Bare) B4075 (Black) | No ISO Mount | 6061 Aluminum |
| 3 | MS1013 | Double Washer | Stainless Steel |
| 4 | MS2012 | M8 x 1.25 x 18 BHCS | Steel |
| 5 | MS2013 | M5 x 0.8 SHCS | Steel |
| 6 | MS2016 | M5 Hex Nut | Steel |
| 7 | MS5001 | BRASS THUMB NUT | Brass |

COMPATIBLE FRAME COMPONENTS

| 6/4 TITANIUM | 17/4 STAINLESS | DESCRIPTION |
|--------------|----------------|------------------|
| DS0001 | DS1001, DS1007 | Flanged |
| DS0004 | DS1004 | Flat |
| DS0004BD | DS1004BD | Flat, Belt Drive |

See website for additional inserts.
Inserts and frame components
sold separately.



PARAGON MACHINE WORKS

TITLE:
Left Side Insert, Sliding,
No ISO Mount,
12 mm Hub

| | NAME | DATE |
|-----------|------|------|
| DRAWN BY: | L.L | 9/24 |

CHECKED BY:

MATERIAL: 6061 ALUMINUM

GENERAL TOLERANCES

X.X ± 0.020"

X.XX ± 0.010"

X.XXX ± 0.005"

**PROPRIETARY AND
CONFIDENTIAL**

THE INFORMATION CONTAINED IN THIS
DRAWING IS PROVIDED FOR
FRAMEBUILDERS AND IS THE PROPERTY OF
PARAGON MACHINE WORKS. ANY
REPRODUCTION IN PART OR AS A WHOLE
WITHOUT THE WRITTEN PERMISSION OF
PARAGON MACHINE WORKS IS PROHIBITED.

| SIZE | DWG. NO. | REV |
|------|----------|-----|
| A | DR4075 | A1 |

SCALE: 2:3

SHEET 2 OF 1