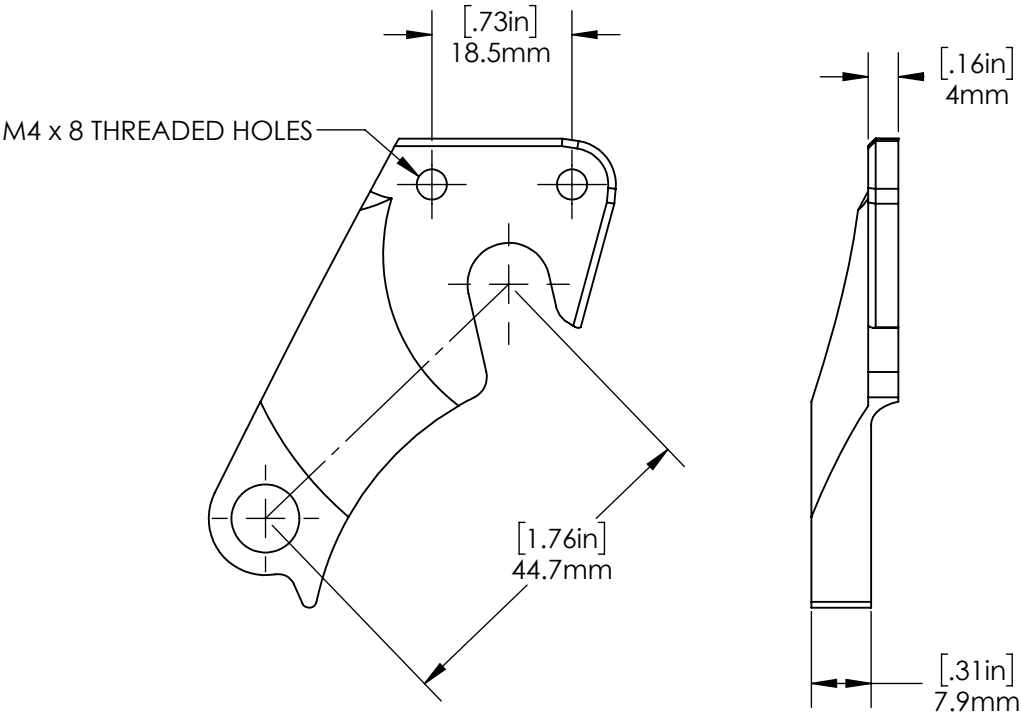


COMPATIBLE DROPOUTS		
PART NUMBER	MATERIAL	DESCRIPTION
DR0030 DR1030 DR2030	6-4 TITANIUM 17-4 STAINLESS 4130 STEEL	48 DEGREE LOWMOUNT DISC DROPOUT, WITH EYELETS
DR0031 DR1031 DR2031	6-4 TITANIUM 17-4 STAINLESS 4130 STEEL	58 DEGREE LOWMOUNT DISC DROPOUT, WITH EYELETS
DR0034 DR1034 DR2034	6-4 TITANIUM 17-4 STAINLESS 4130 STEEL	48 DEGREE LOWMOUNT DISC DROPOUT, NO EYELETS
DR0035 DR1035 DR2035	6-4 TITANIUM 17-4 STAINLESS 4130 STEEL	58 DEGREE LOWMOUNT DISC DROPOUT, NO EYELETS
DR2026	4130 STEEL	48 DEGREE LOW MOUNT DISC DROPOUT, FULL THICKNESS, WITH EYELETS
DR2027	4130 STEEL	48 DEGREE LOW MOUNT DISC DROPOUT, FULL THICKNESS, WITH EYELETS
DR0004	6/4 TITANIUM	1-1/2" ROUND, REAR DROPOUT
DR2001	1018 STEEL	1-1/2" ROUND, REAR DROPOUT



<div> <div> <b>PROPRIETARY AND CONFIDENTIAL</b> </div> <div>           THE INFORMATION CONTAINED IN THIS DRAWING IS PROVIDED FOR FRAMEBUILDERS AND IS THE PROPERTY OF PARAGON MACHINE WORKS. ANY REPRODUCTION IN PART OR AS A WHOLE WITHOUT THE WRITTEN PERMISSION OF PARAGON MACHINE WORKS IS PROHIBITED.         </div> </div>			<div> <div> <b>PARAGON MACHINE WORKS</b> </div> <div>           TITLE: SHIMANO DIRECT MOUNT MOUNTAIN HANGER         </div> </div>		
			<div> <div>           SIZE <b>A</b> </div> <div>           DWG. NO. <b>DR4034</b> </div> <div>           REV         </div> </div>		
			<div> <div>SCALE: 1:1</div> <div>SHEET 1 OF 1</div> </div>		
			<div> <div>           DRAWN BY: DN            CHECKED BY: MCN         </div> <div>           NAME MCN         </div> <div>           DATE 4/2018 4/2018         </div> </div>		