

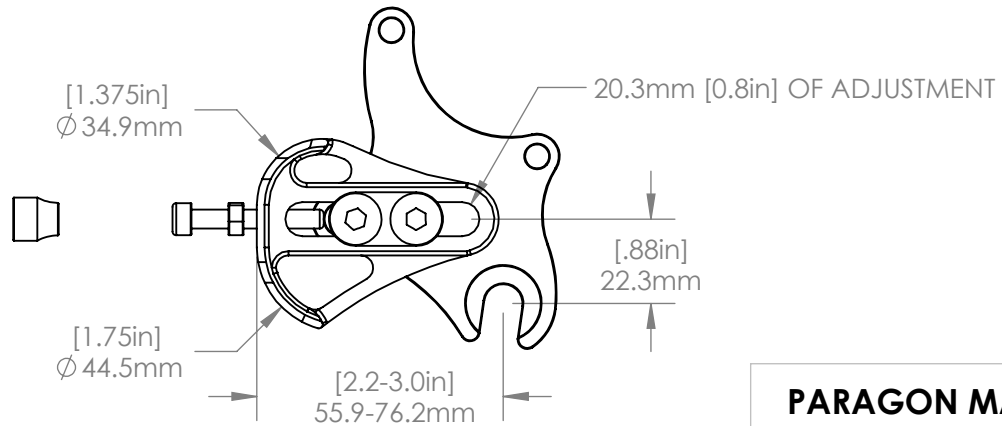
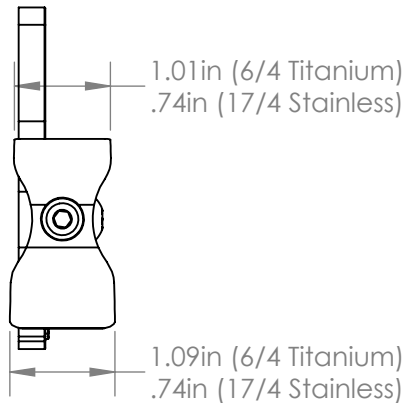
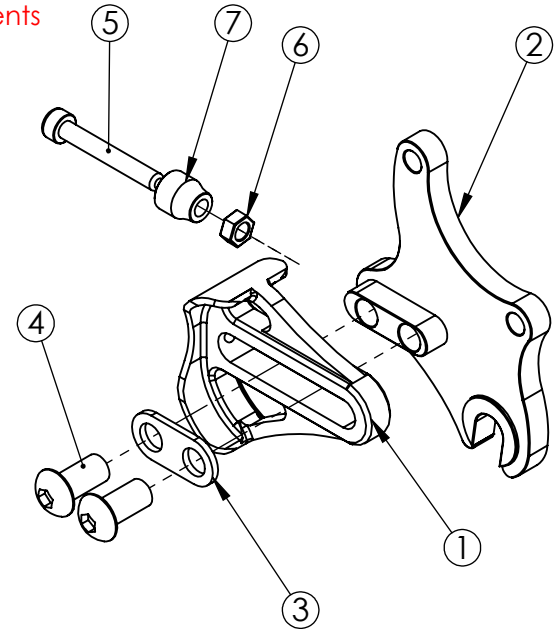
EXPLODED VIEW

| ITEM NO. | PART NO. | DESCRIPTION | MATERIAL |
|----------|--------------------------------|-----------------------|-------------------|
| 1 | DS0001 | Flanged | 6/4 Titanium |
| 2 | DR4009 (Bare) B4009 (Black) | Post Mount, 140 Rotor | 6061 Aluminum |
| 3 | MS1013 | Double Washer | Stainless Steel |
| 4 | MS2012 | M8 x 1.25 x 18 BHCS | Zinc Plated Steel |
| 5 | MS2013 | M5 x 0.8 SHCS | Steel |
| 6 | MS2016 | M5 Hex Nut | Steel |
| 7 | MS5001 | M5 Thumb Nut | Brass |

COMPATIBLE FRAME COMPONENTS

| 6/4 TITANIUM | 17/4 STAINLESS | DESCRIPTION |
|--------------|----------------|------------------|
| DS0001 | DS1001 | Flanged |
| DS0004 | DS1004 | Flat |
| DS0004BD | DS1004BD | Flat, Belt Drive |

See website for additional inserts.
inserts and frame components
sold separately.



PARAGON MACHINE WORKS

TITLE:
Left Side Insert, Sliding,
ISO Mount, 10 mm Hub

| | NAME | DATE |
|-------------|------|--------|
| DRAWN BY: | CAN | 8/2018 |
| CHECKED BY: | MCN | 8/2018 |

MATERIAL: 6061 ALUMINUM
GENERAL TOLERANCES
X.X ± 0.020"
X.XX ± 0.010"
X.XXX ± 0.005"

| SIZE | DWG. NO. | REV |
|------|----------|-----|
| A | DR4009 | A1 |

SCALE: 2:3

SHEET 1 OF 1

PROPRIETARY AND CONFIDENTIAL

THE INFORMATION CONTAINED IN THIS DRAWING IS PROVIDED FOR FRAMEBUILDERS AND IS THE PROPERTY OF PARAGON MACHINE WORKS. ANY REPRODUCTION IN PART OR AS A WHOLE WITHOUT THE WRITTEN PERMISSION OF PARAGON MACHINE WORKS IS PROHIBITED.