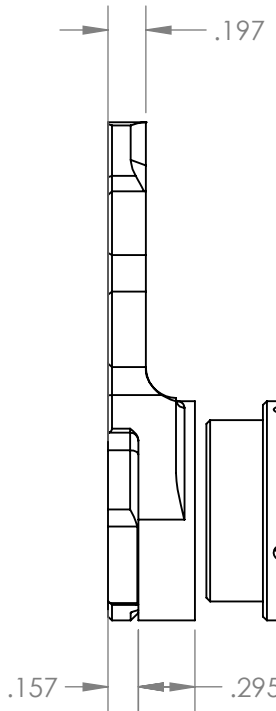


INSERTS FOR RIGHT SIDE DROPOUT		
PART #	MATERIAL	OFFSET
MS1081	303 STAINLESS	0mm
MS1082	303 STAINLESS	.5mm
MS1083	303 STAINLESS	1mm

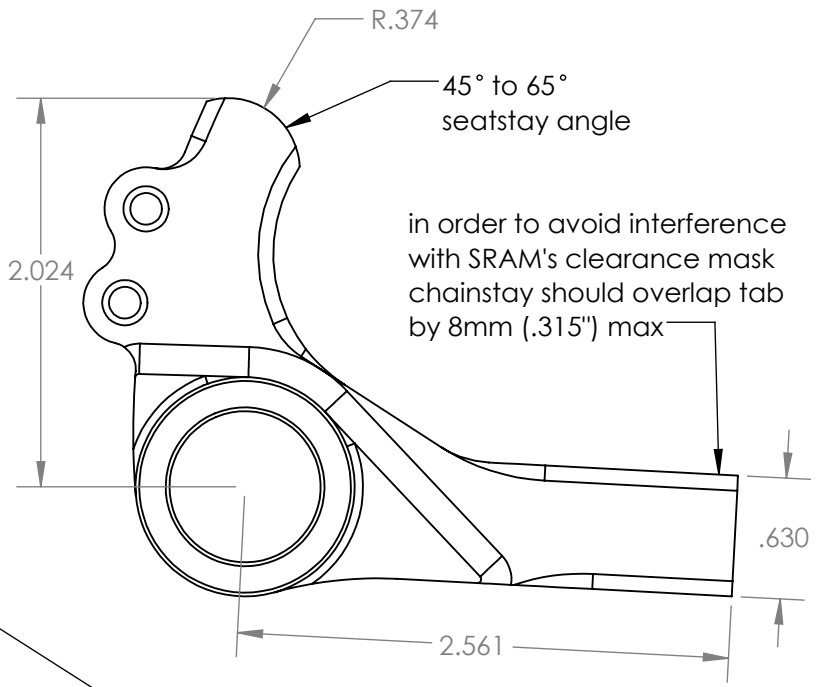
in order to avoid interference with SRAM's clearance mask use this eyelet if mounting a rack

insert must be silver soldered to dropout

use this eyelet if mounting a fender. bolt for this eyelet must not protrude on inside face of dropout



insert must be purchased separately



**PARAGON MACHINE WORKS**

TITLE:  
 RIGHT SIDE FRAME COMPONENTS  
 FOR UDH/T-TYPE DROPOUT  
 WITH FLAT MOUNT  
 FOR 160/180 ROTOR

	NAME	DATE
DRAWN BY:	L.L	10/23
CHECKED BY:		

MATERIAL:  
GENERAL TOLERANCES:  
 X.X ± 0.020"  
 X.XX ± 0.010"  
 X.XXX ± 0.005"

SIZE	DWG. NO.	REV
A	DR2104	A1

SCALE: 1:1 SHEET 2 OF 2

**PROPRIETARY AND CONFIDENTIAL**  
 THE INFORMATION CONTAINED IN THIS DRAWING IS PROVIDED FOR FRAMEBUILDERS AND IS THE PROPERTY OF PARAGON MACHINE WORKS. ANY REPRODUCTION IN PART OR AS A WHOLE WITHOUT THE WRITTEN PERMISSION OF PARAGON MACHINE WORKS IS PROHIBITED.