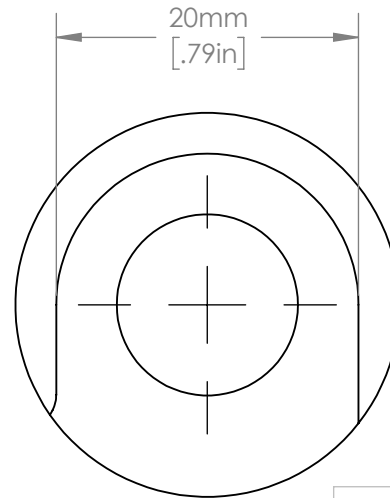
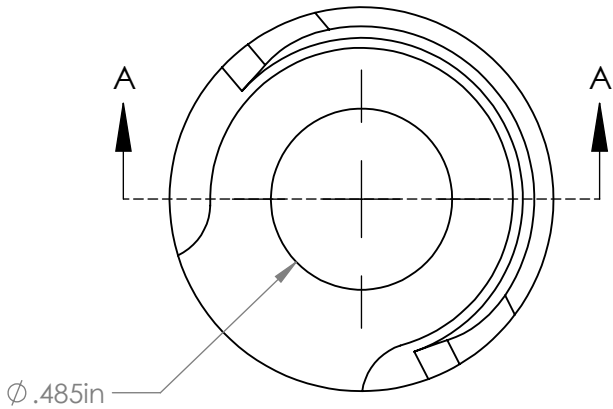


DR1095, DR2095 = 22mm [.866in]  
 DR0096, DR2097 = 25.4mm [1.00in]  
 DR1096, DR2096 = 22mm [.866in]  
 DR0097 = 26.4mm [1.04in]

Part No.	Description	Flange Width	Material
DR1095	1" OD	.866"	17/4 Stainless
DR2095	1" OD	.866"	1018 Steel
DR0096	1-1/8" OD	1.000"	6/4 Titanium
DR1096	1-1/8" OD	.866"	17/4 Stainless
DR2096	1-1/8" OD	.866"	1018 Steel
DR0097	1-1/4" OD	1.04"	6/4 Titanium
DR2097	1-1/8" OD	1.000"	1018 Steel



**PARAGON MACHINE WORKS**

TITLE: **RIGHT FRAME COMPONENT FOR SNAP RING DROPOUT**

	NAME	DATE
DRAWN BY:	DN	1/2019
CHECKED BY:	MCN	1/2019

**PROPRIETARY AND CONFIDENTIAL**

THE INFORMATION CONTAINED IN THIS DRAWING IS PROVIDED FOR FRAMEBUILDERS AND IS THE PROPERTY OF PARAGON MACHINE WORKS. ANY REPRODUCTION IN PART OR AS A WHOLE WITHOUT THE WRITTEN PERMISSION OF PARAGON MACHINE WORKS IS PROHIBITED.

MATERIAL:  
GENERAL TOLERANCES:  
 X.X ± 0.020"  
 X.XX ± 0.010"  
 X.XXX ± 0.005"

SIZE	DWG. NO.	REV
<b>A</b>	<b>DR209XR</b>	<b>A1</b>

SCALE: 2:1

SHEET 2 OF 2