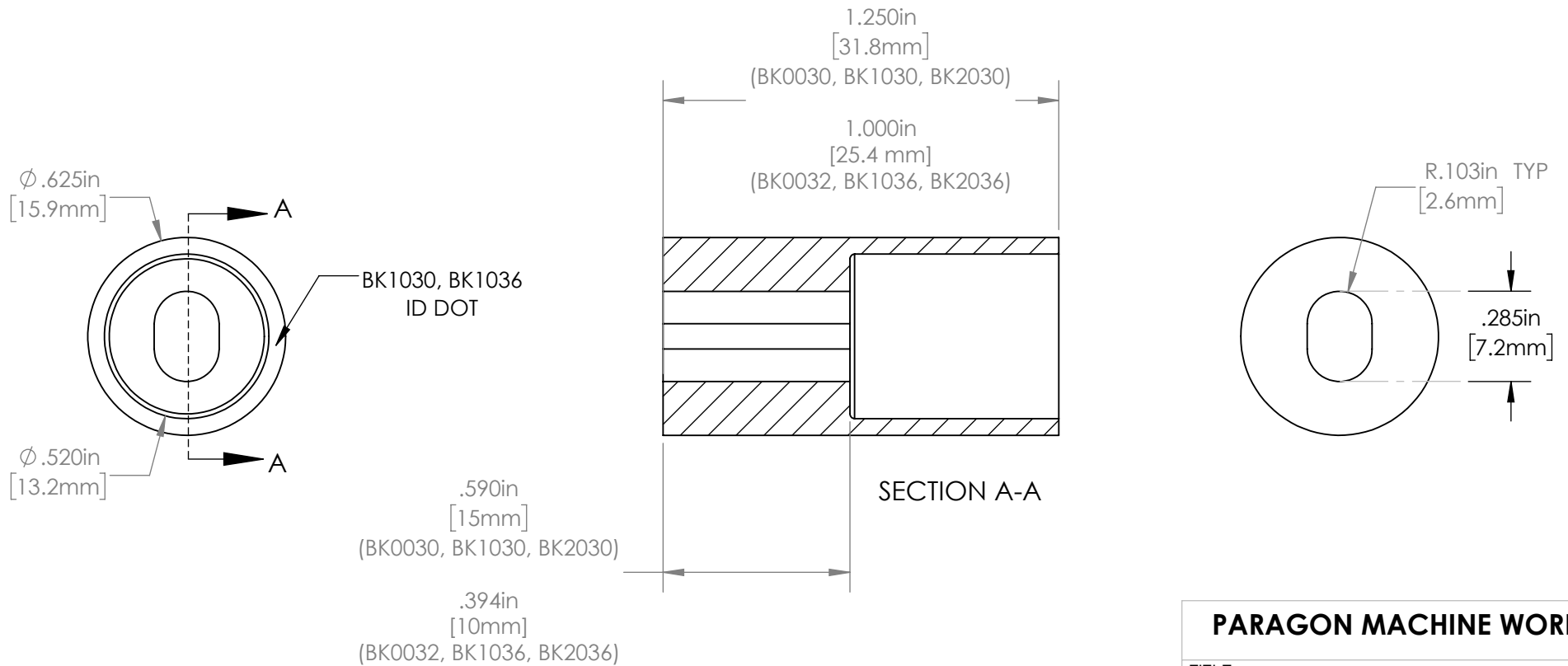


Part Number	Length	Material
BK0030	1-1/4"	6/4 Titanium
BK0032	1"	6/4 Titanium
BK2030	1-1/4"	1018 Steel
BK2036	1"	1018 Steel
BK1030	1-1/4"	304 Stainless
BK1036	1"	304 Stainless



PARAGON MACHINE WORKS

TITLE:		
FLAT CALIPER MOUNT INDIVIDUAL BOSS		
SIZE	DWG. NO.	REV
A	BK003X_103X_203X	A1
SCALE: 2:1		SHEET 1 OF 2

	NAME	DATE
DRAWN BY:	LL	11/15
CHECKED BY:	MCN	11/15

PROPRIETARY AND CONFIDENTIAL

THE INFORMATION CONTAINED IN THIS DRAWING IS PROVIDED FOR FRAMEBUILDERS AND IS THE PROPERTY OF PARAGON MACHINE WORKS. ANY REPRODUCTION IN PART OR AS A WHOLE WITHOUT THE WRITTEN PERMISSION OF PARAGON MACHINE WORKS IS PROHIBITED.

MATERIAL:
GENERAL TOLERANCES:
X.X ± 0.020"
X.XX ± 0.010"
X.XXX ± 0.005"