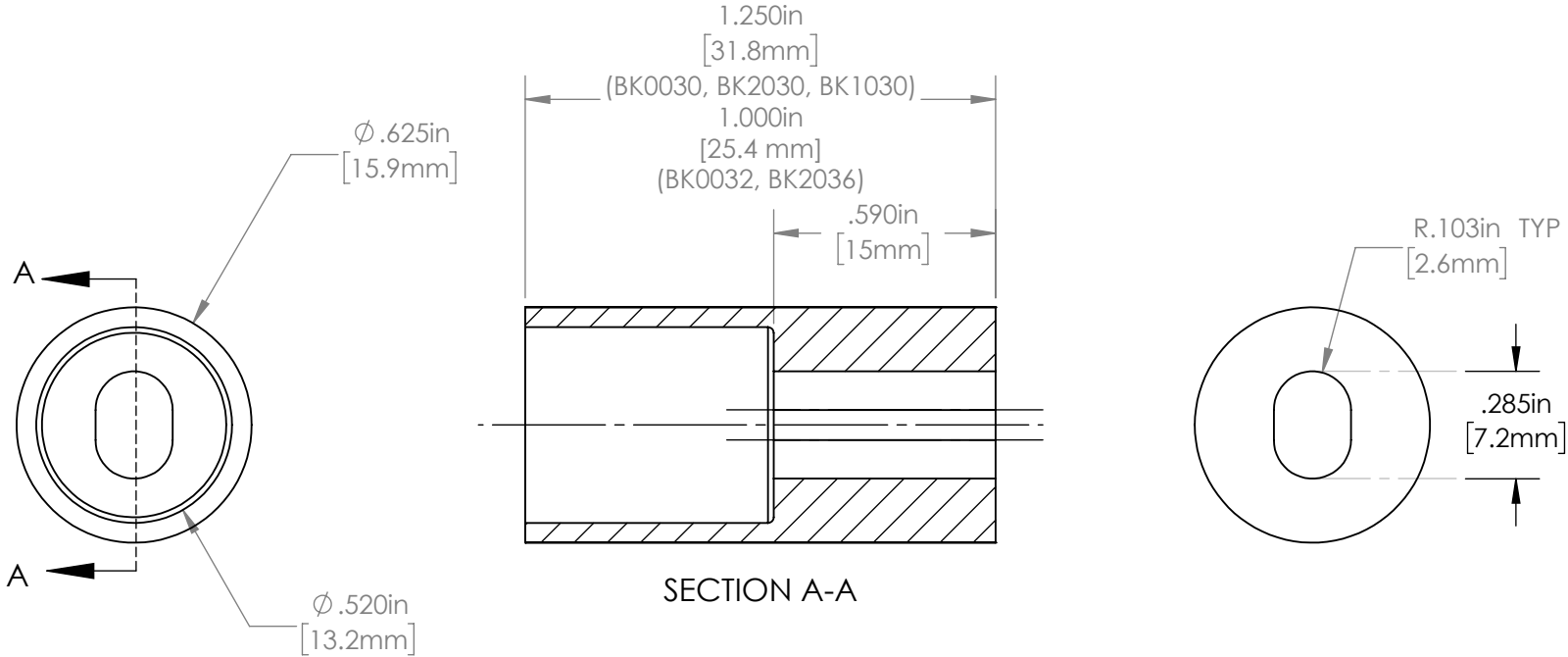


Part Number	Length	Material
BK0030	1-1/4"	6/4 Titanium
BK0032	1"	6/4 Titanium
BK2030	1-1/4"	1018 Steel
BK2036	1"	1018 Steel
BK1030	1-1/4"	304 Stainless
BK1036	1"	304 Stainless



PARAGON MACHINE WORKS

TITLE:

FLAT CALIPER MOUNT
INDIVIDUAL BOSS

SIZE	DWG. NO.	REV
A	BK0030	A1
SCALE: 2:1		SHEET 1 OF 2

	NAME	DATE
DRAWN BY:	L.L	11/15
CHECKED BY:	MCN	11/15
PROPRIETARY AND CONFIDENTIAL THE INFORMATION CONTAINED IN THIS DRAWING IS PROVIDED FOR FRAMEBUILDERS AND IS THE PROPERTY OF PARAGON MACHINE WORKS. ANY REPRODUCTION IN PART OR AS A WHOLE WITHOUT THE WRITTEN PERMISSION OF PARAGON MACHINE WORKS IS PROHIBITED.		
MATERIAL: GENERAL TOLERANCES: X.X \pm 0.020" X.XX \pm 0.010" X.XXX \pm 0.005"		