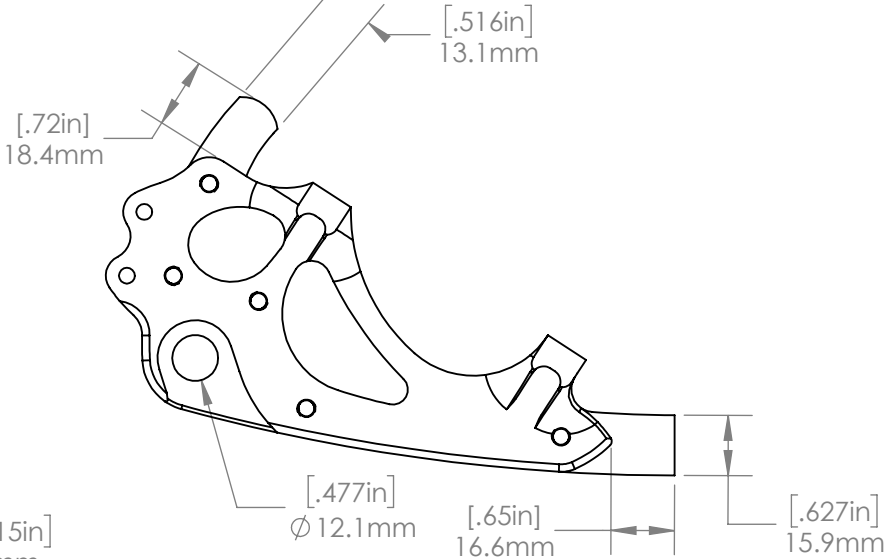
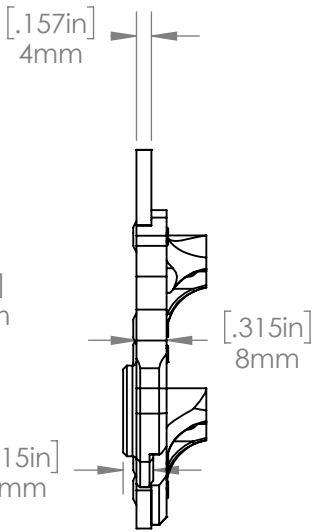
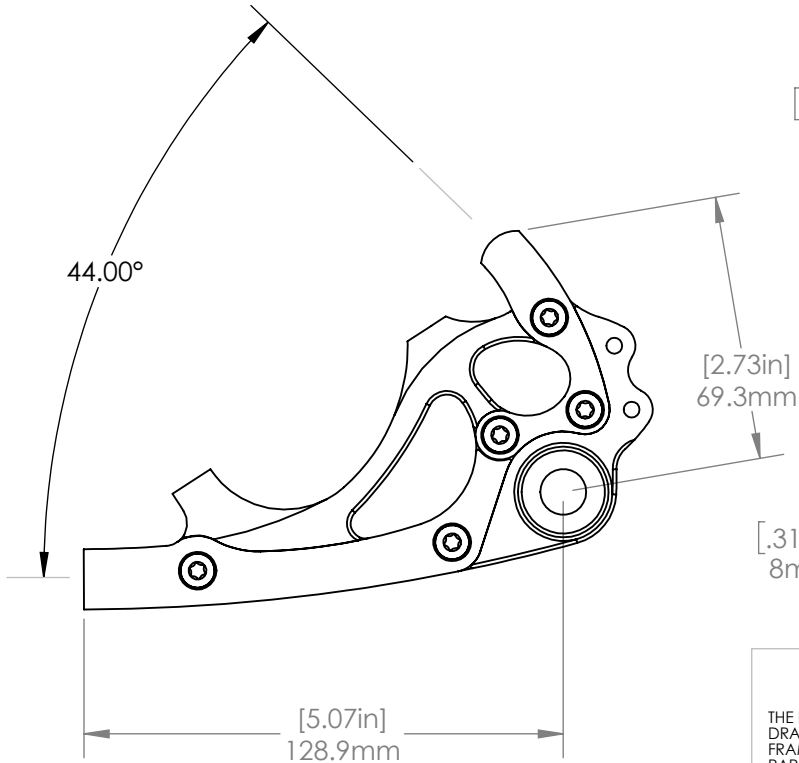
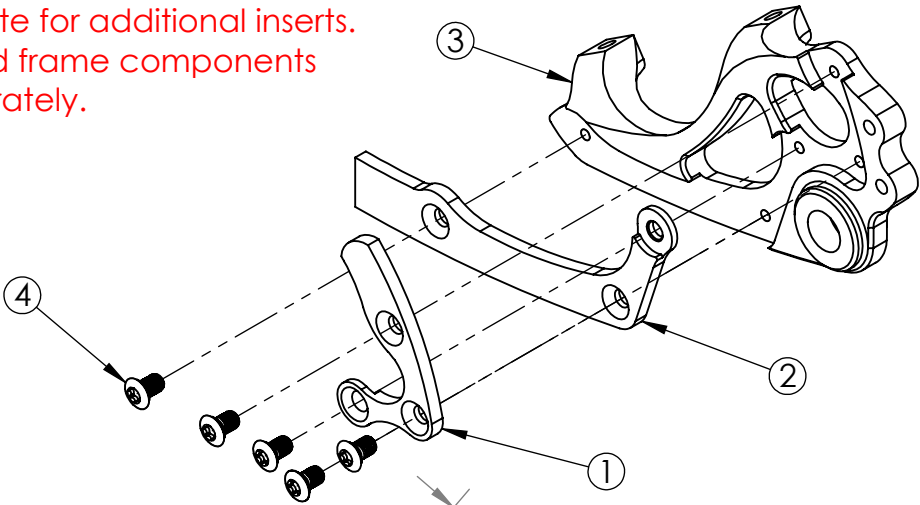


COMPATIBLE FRAME COMPONENTS		
PART NUMBER		DESCRIPTION
PD000		6/4 Titanium
PD100		17/4 Stainless Steel
INSERTS		
PART NUMBER		DESCRIPTION
PA410 (BARE) PB410 (BLACK)		Eyelets
PA402 (BARE) PB402 (BLACK)		No Eyelets
ITEM NO.	PART NO.	EXPLODED VIEW
1	PD000UL	Upper Right Frame Component
2	PD000LL	Lower Right Frame Component
3	PA410	Eyelets
4	PDBOLT	M5 x .8 BHCS, QTY 5/Insert

See website for additional inserts.
Inserts and frame components
sold separately.



PROPRIETARY AND
CONFIDENTIAL

THE INFORMATION CONTAINED IN THIS
DRAWING IS PROVIDED FOR
FRAMEBUILDERS AND IS THE PROPERTY OF
PARAGON MACHINE WORKS. ANY
REPRODUCTION IN PART OR AS A WHOLE
WITHOUT THE WRITTEN PERMISSION OF
PARAGON MACHINE WORKS IS PROHIBITED.

	NAME	DATE
DRAWN BY:	CAN	8/2018
CHECKED BY:	MCN	8/2018

MATERIAL:
GENERAL TOLERANCES:
X.X ± 0.020"
X.XX ± 0.010"
X.XXX ± 0.005"

PARAGON MACHINE WORKS

TITLE:
Left Side Insert, PolyDrop,
Post Mount For 160 Rotor,
Eyelets, 12 mm Hub

SIZE	DWG. NO.	REV
A	PA410_PA402	A1

SCALE: 1:2

SHEET 1 OF 1