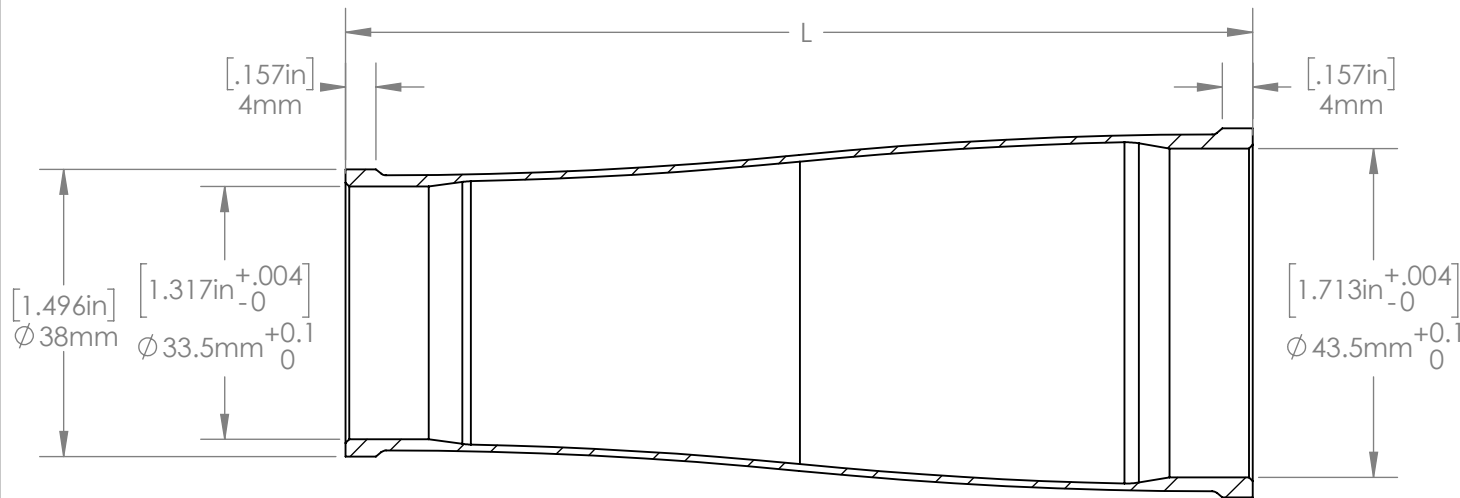
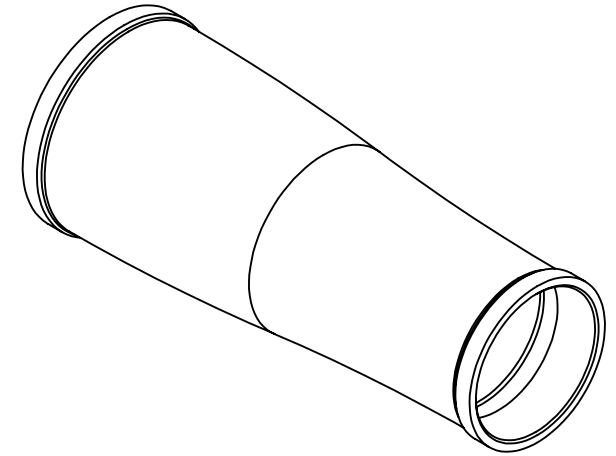
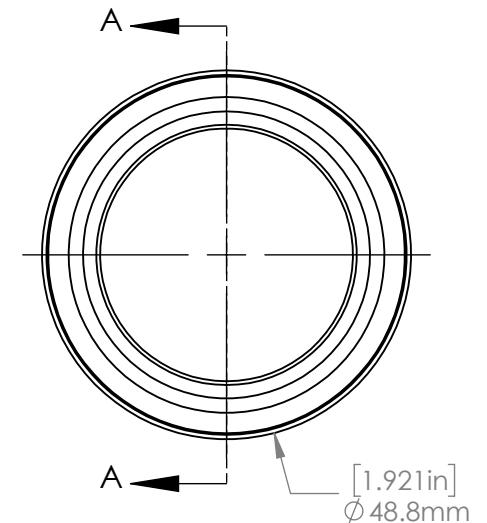


Part #, 6/4 Titanium	Part #, 4130 Steel	(L) mm	(L) in
HT0502	HT2502	100.5 mm	3.957"
HT0504	HT2504	105.5 mm	4.154"
HT0506	HT2506	110.5 mm	4.350"
HT0508	HT2508	115.5 mm	4.547"
HT0510	HT2510	120.5 mm	4.744"
HT0512	HT2512	125.5 mm	4.941"
HT0514	HT2514	130.5 mm	5.138"
HT0516	HT2516	135.5 mm	5.335"
HT0518	HT2518	140.5 mm	5.531"
HT0522	HT2522	150.5 mm	5.925"
HT0526	HT2526	160.5 mm	6.319"
HT0530	HT2530	170.5 mm	6.713"
HT0534	HT2534	180.5 mm	7.11"



SECTION A-A  
SCALE 1 : 1



**NOTES:**

- 1) Bores to be finished after fabrication.
- 2) Length supplied .5mm oversize for finishing.

**PROPRIETARY AND  
CONFIDENTIAL**

THE INFORMATION CONTAINED IN THIS  
DRAWING IS PROVIDED FOR  
FRAMEBUILDERS AND IS THE PROPERTY OF  
PARAGON MACHINE WORKS. ANY  
REPRODUCTION IN PART OR AS A WHOLE  
WITHOUT THE WRITTEN PERMISSION OF  
PARAGON MACHINE WORKS IS PROHIBITED.

	NAME	DATE
DRAWN BY:	DN	10/2018
CHECKED BY:	MCN	10/2018

MATERIAL:  
GENERAL TOLERANCES:  
X.X ± 0.020"  
X.XX ± 0.010"  
X.XXX ± 0.005"

**PARAGON MACHINE WORKS**

TITLE:

**EC34-EC44  
HEADTUBES**

SIZE	DWG. NO.	REV
<b>A</b>	<b>EC34_44</b>	

SCALE: 1:1

SHEET 1 OF 1