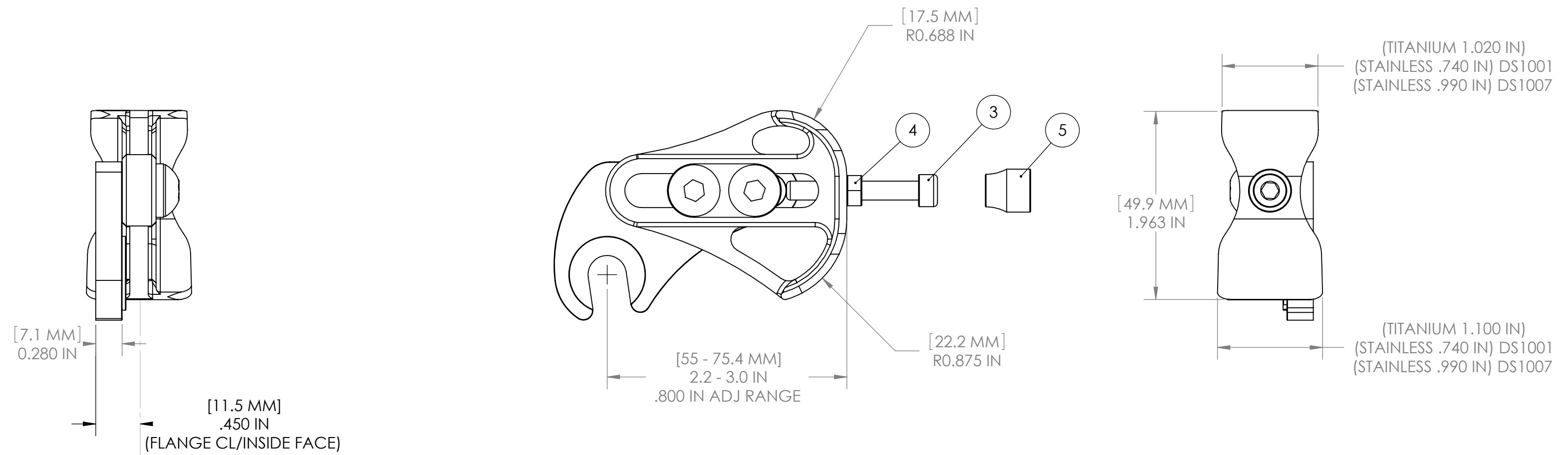
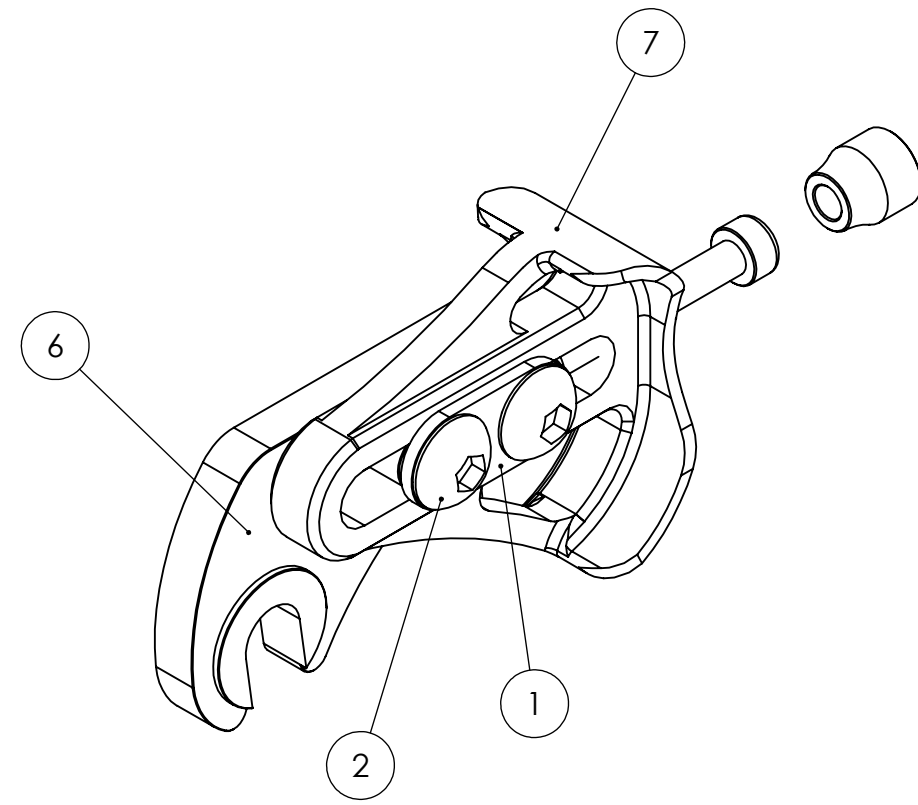


ITEM NO.	PART NUMBER	DESCRIPTION	QTY.
1	2-HOLE_WASHER	STAINLESS DOUBLE WASHER	1
2	B4079 (Black) DR4079 (Bare)	M8 x 1.25 STEEL BUTTON HEAD CAP	2
3	B4088 (Black) DR4088 (Bare)	M5 x 0.8 SOCKET HEAD CAP SCREW	1
4	MS201	M5 HEX NUT	1
5	MS5001	M5 THUMB NUT	1
6	DR4005	RIGHT SIDE INSERT, NO HANGER	1
7	DS1001	FLANGED FRAME COMPONENT (6/4 TITANIUM)	1
	DS1001	FLANGED FRAME COMPONENT (17/4 STAINLESS STEEL)	
	DS1007		

CHECK WEBSITE FOR ADDITIONAL INSERT AND HARDWARE OPTIONS.



Paragon Machine Works

PROPRIETARY: THE INFORMATION CONTAINED IN THIS DRAWING IS PROVIDED FOR FRAMEBUILDERS AND IS THE SOLE PROPERTY OF PARAGON MACHINE WORKS. ANY REPRODUCTION IN PART OR AS A WHOLE WITHOUT THE WRITTEN PERMISSION OF PARAGON MACHINE WORKS IS PROHIBITED.

TITLE: **RIGHT SIDE FLANGED SLIDING DROPOUT ASSEMBLY**

NAME	DATE	SIZE
DRAWN DN	3/2018	C
CHECKED MN	3/2018	

DWG. NO.	REV
DS0001R	A

SCALE: 1:1 SHEET 1 OF 1