

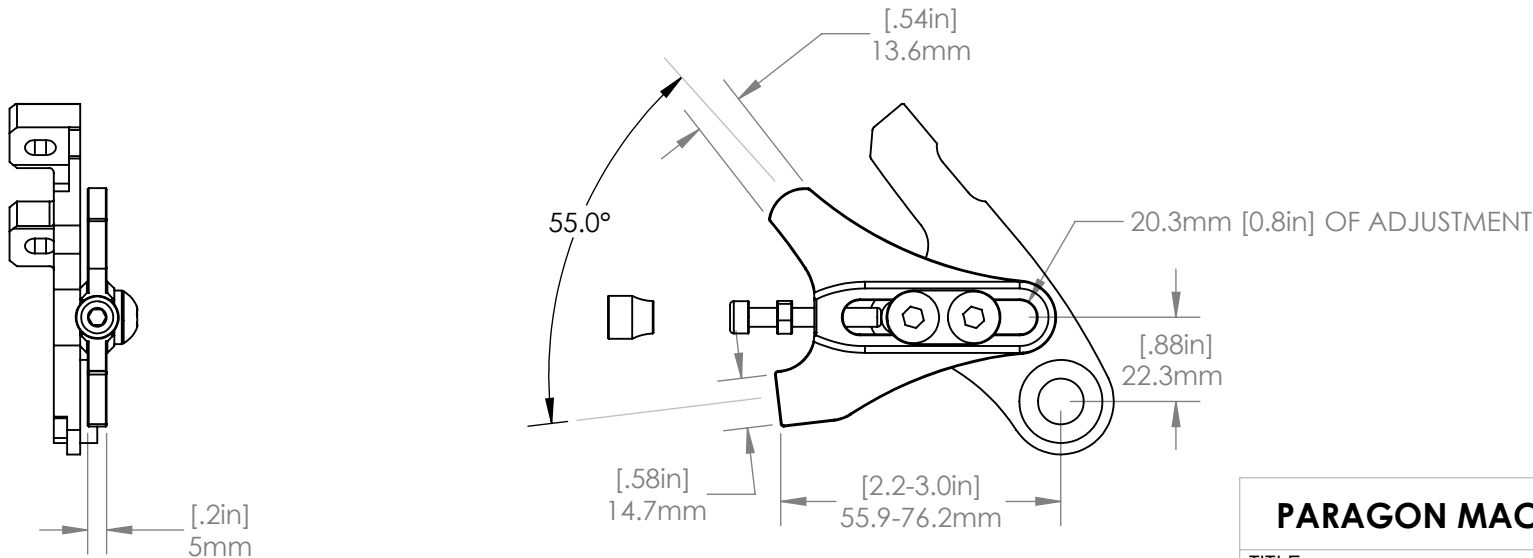
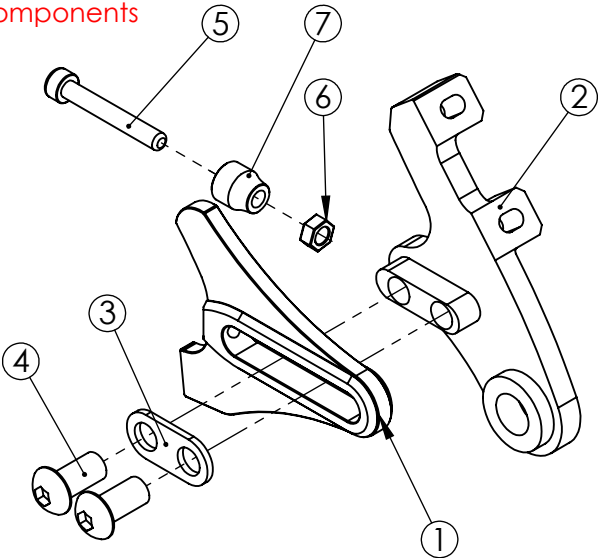
EXPLODED VIEW

ITEM NO.	PART NO.	DESCRIPTION	MATERIAL
1	DS0004	Flanged	6/4 Titanium
2	DR4041 (Bare) B4041 (Black)	Post Mount, 140 Rotor	6061 Aluminum
3	MS1013	Double Washer	Stainless Steel
4	MS2012	M8 x 1.25 x 18 BHCS	Zinc Plated Steel
5	MS2013	M5 x 0.8 SHCS	Steel
6	MS2016	M5 Hex Nut	Steel
7	MS5001	M5 Thumb Nut	Brass

COMPATIBLE FRAME COMPONENTS

6/4 TITANIUM	17/4 STAINLESS	DESCRIPTION
DS0001	DS1001	Flanged
DS0004	DS1004	Flat
DS0004BD	DS1004BD	Flat, Belt Drive

See website for additional inserts.
Inserts and frame components
sold separately.



PROPRIETARY AND
CONFIDENTIAL

THE INFORMATION CONTAINED IN THIS
DRAWING IS PROVIDED FOR
FRAMEBUILDERS AND IS THE PROPERTY OF
PARAGON MACHINE WORKS. ANY
REPRODUCTION IN PART OR AS A WHOLE
WITHOUT THE WRITTEN PERMISSION OF
PARAGON MACHINE WORKS IS PROHIBITED.

	NAME	DATE
DRAWN BY:	CAN	8/2018
CHECKED BY:	MCN	8/2018
MATERIAL: 6061 ALUMINUM		
GENERAL TOLERANCES		
X.X ± 0.020"		
X.XX ± 0.010"		
X.XXX ± 0.005"		

PARAGON MACHINE WORKS

TITLE:
Left Side Insert, Sliding,
Flat Mount, 160 Rotor,
12 mm Hub

SIZE	DWG. NO.	REV
A	DR4041	A1

SCALE: 2:3

SHEET 1 OF 1