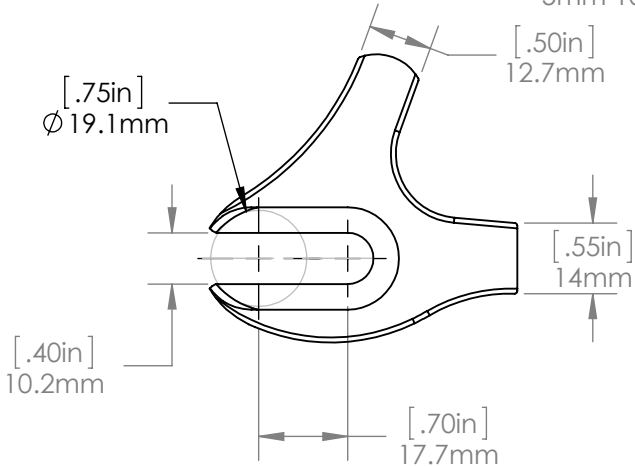
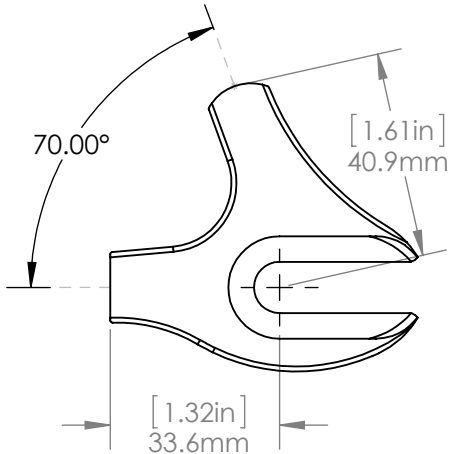
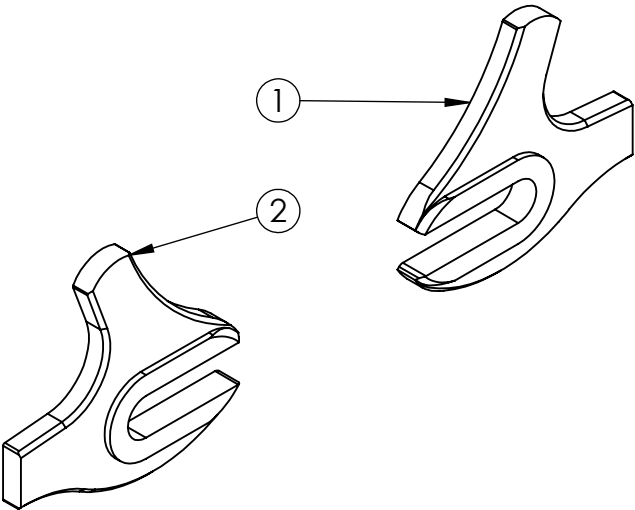
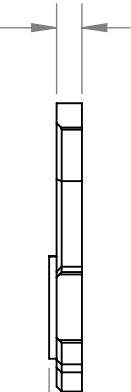


ITEM NO.	PART NUMBER	DESCRIPTION	QTY.
1	DR0013R	RIGHT REAR, 70 DEGREE RELIEVED TRACK END (CP TITANIUM)	1
	DR1016R	RIGHT REAR, 70 DEGREE TRACK END (17-4 STAINLESS)	
	DR2013R	RIGHT REAR, 70 DEGREE TRACK END (4130 STEEL)	
	DR2021L	RIGHT REAR, 70 DEGREE TRACK END (1018 STEEL)	
2	DR0013L	LEFT REAR, 70 DEGREE RELIEVED TRACK END (CP TITANIUM)	1
	DR1016R	LEFT REAR, 70 DEGREE TRACK END (17-4 STAINLESS)	
	DR2013R	LEFT REAR, 70 DEGREE TRACK END (4130 STEEL)	
	DR2021R	RIGHT REAR, 70 DEGREE TRACK END (1018 STEEL)	



4mm CP TITANIUM & 17-4 STAINLESS
5mm 1018 & 4130 STEEL



[.26in]
6.5mm

PARAGON MACHINE WORKS

TITLE:
 REAR 70 DEGREE
 RELIEVED TRACK ENDS

	NAME	DATE
DRAWN BY:	SWS	11/19/14
CHECKED BY:	MCN	11/19/14
COMMENTS:		

SIZE	DWG. NO.	REV
A	DR0013	A1

PROPRIETARY AND
CONFIDENTIAL

THE INFORMATION CONTAINED IN THIS
DRAWING IS PROVIDED FOR
FRAMEBUILDERS AND IS THE PROPERTY OF
PARAGON MACHINE WORKS. ANY
REPRODUCTION IN PART OR AS A WHOLE
WITHOUT THE WRITTEN PERMISSION OF
PARAGON MACHINE WORKS IS PROHIBITED.