

ITEM NO.	PART NUMBER	DESCRIPTION	QTY.
1	DR0004L	left rear, Wright, 1 1/2" x1.04" frame component (6-4 titanium)	1
	DR2001L	left rear, Wright, 1 1/2" x1.04" frame component (1018 steel)	
2	BK0018	post style caliper mount for 160mm rotors and 1 1/2", 135-10 axle Wright dropout (6-4 titanium)	1
	BK2018	post style caliper mount for 160mm rotors and 1 1/2", 135-10 axle Wright dropout (4130 steel)	

D

C

B

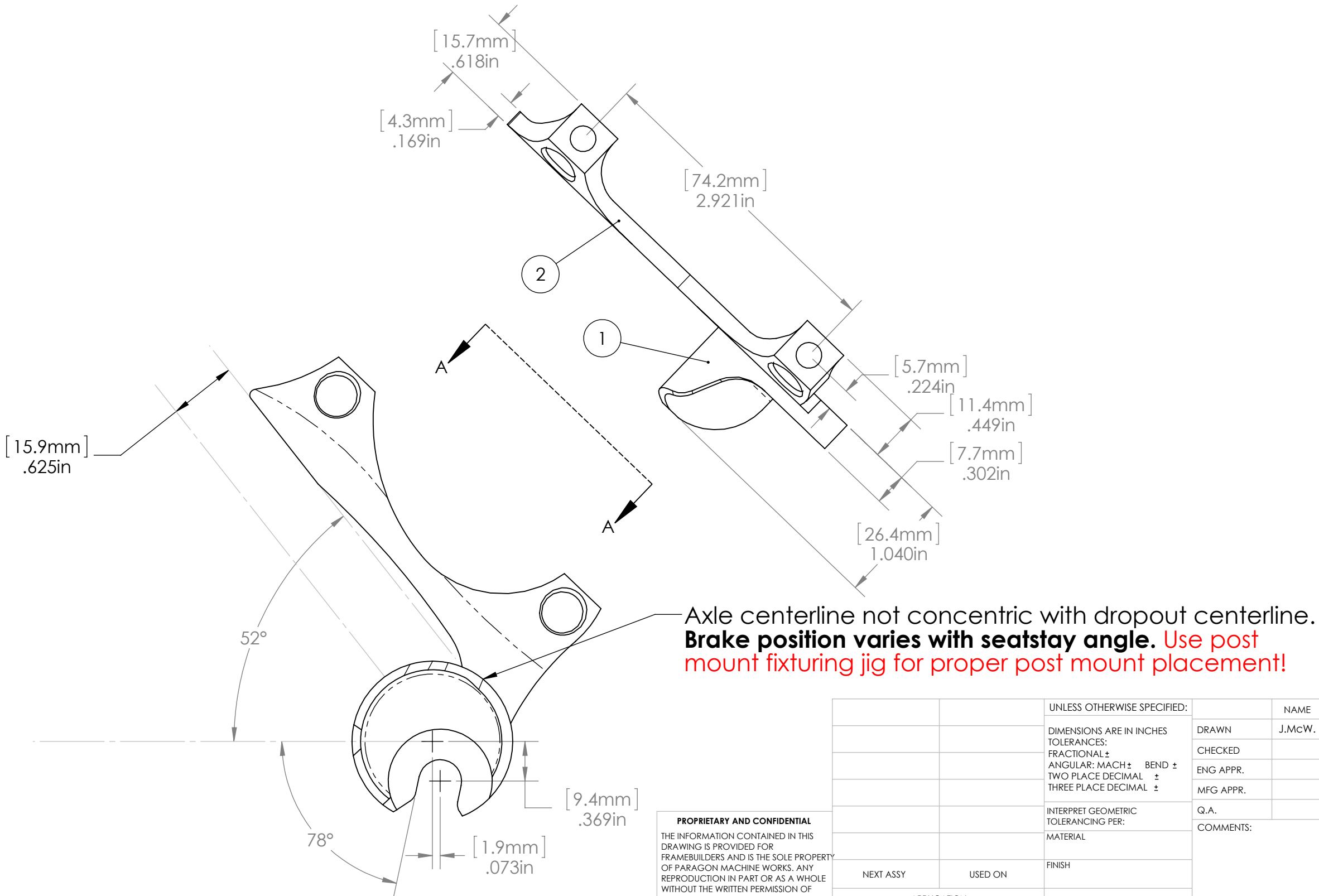
A

D

C

B

A



PROPRIETARY AND CONFIDENTIAL
THE INFORMATION CONTAINED IN THIS DRAWING IS PROVIDED FOR FRAMEBUILDERS AND IS THE SOLE PROPERTY OF PARAGON MACHINE WORKS. ANY REPRODUCTION IN PART OR AS A WHOLE WITHOUT THE WRITTEN PERMISSION OF PARAGON MACHINE WORKS IS PROHIBITED.

		UNLESS OTHERWISE SPECIFIED:		NAME	DATE
		DIMENSIONS ARE IN INCHES			
		TOLERANCES:	DRAWN	J.McW.	2012
		FRACTIONAL ±	CHECKED		
		ANGULAR: MACH ± BEND ±	ENG APPR.		
		TWO PLACE DECIMAL ±	MFG APPR.		
		THREE PLACE DECIMAL ±	Q.A.		
		INTERPRET GEOMETRIC TOLERANCING PER:	COMMENTS:		
		MATERIAL			
		FINISH			
NEXT ASSY	USED ON				
APPLICATION		DO NOT SCALE DRAWING			

Paragon Machine Works					
TITLE: 1 1/2" Wright/BK0018 relationship					
SIZE	DWG. NO.		REV		
B	BK0018				
SCALE: 1:2		WEIGHT:		SHEET 1 OF 1	