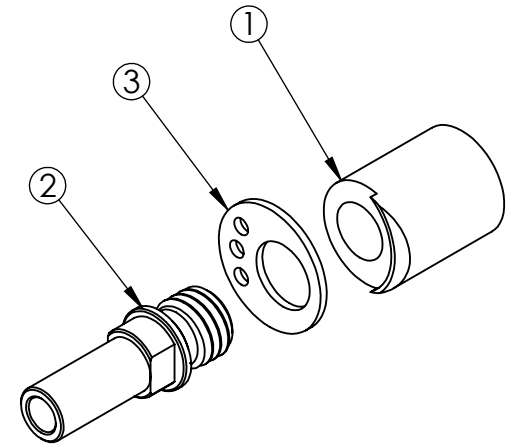
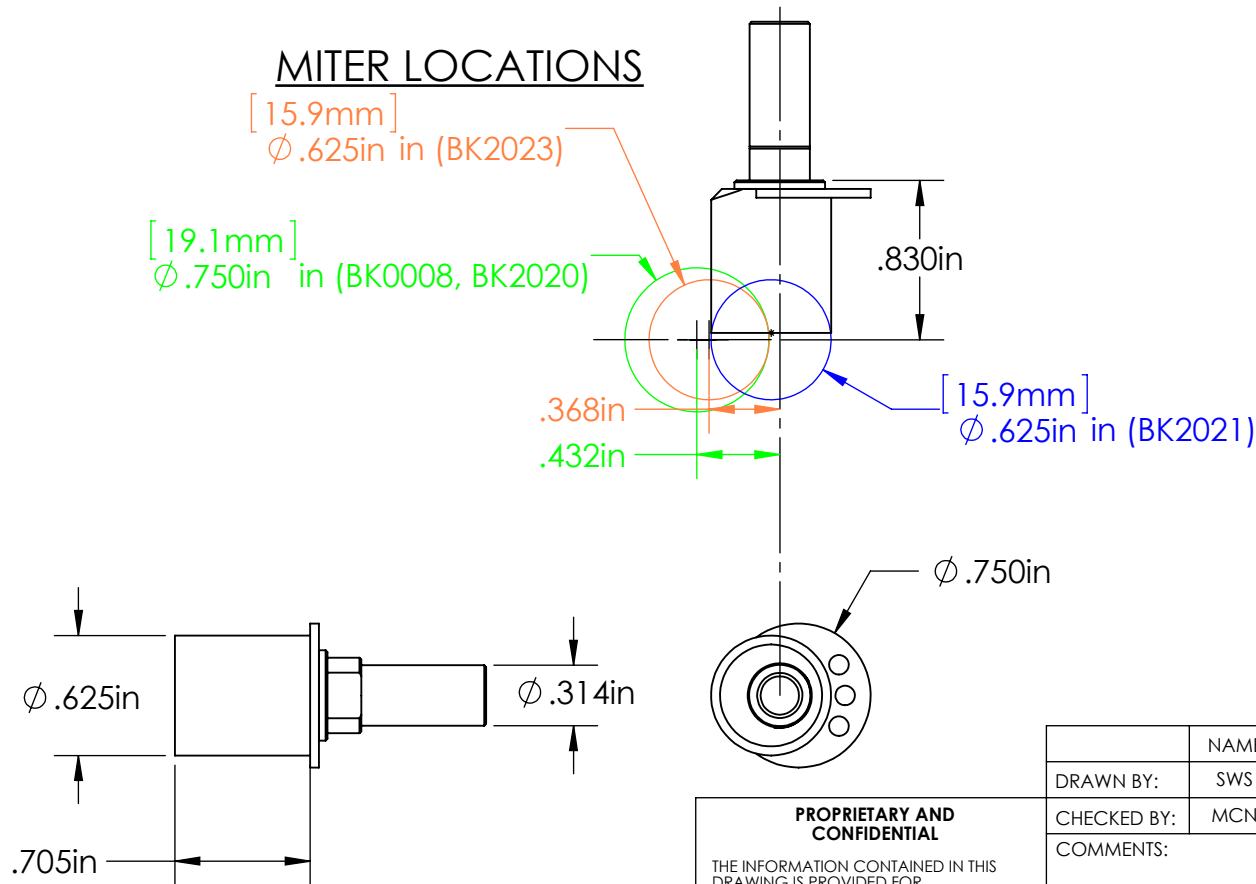


ITEM NO.	PART NUMBER	DESCRIPTION	QTY.
1	BK0007	UNMITERED BRAKE BOSS (6-4 TITANIUM)	1
	BK1007	UNMITERED BRAKE BOSS (304 STAINLESS STEEL)	
	BK2019	UNMITERED BRAKE BOSS (4130 STEEL)	
	BK0008	3/4" MITERED BRAKE BOSS (6-4 TITANIUM)	
	BK2020	3/4" MITERED BRAKE BOSS (4130 STEEL)	
	BK2021	5/8" CENTER MITERED BRAKE BOSS (4130 STEEL)	
	BK2023	5/8" MITERED BRAKE BOSS (4130 STEEL)	
2	BK2013	2008+ SHIMANO BRAKE STUD (1144 STEEL)	1
	BK2014	PRE-2008 SHIMANO BRAKE STUD (1144 STEEL)	
	BK2015	PAUL COMPONENTS BRAKE STUD (1144 STEEL)	
3	BK1010	BRAKE RING (STAINLESS STEEL)	1



MITER LOCATIONS



PARAGON MACHINE WORKS

TITLE:
5/8" THREE PIECE
BRAKE BOSS

	NAME	DATE
DRAWN BY:	SWS	02/04/15
CHECKED BY:	MCN	02/04/15

COMMENTS:

PROPRIETARY AND CONFIDENTIAL
THE INFORMATION CONTAINED IN THIS DRAWING IS PROVIDED FOR FRAMEBUILDERS AND IS THE PROPERTY OF PARAGON MACHINE WORKS. ANY REPRODUCTION IN PART OR AS A WHOLE WITHOUT THE WRITTEN PERMISSION OF PARAGON MACHINE WORKS IS PROHIBITED.

SIZE	DWG. NO.	REV
A	BK0007	A2

SCALE: 1:1

SHEET 1 OF 1